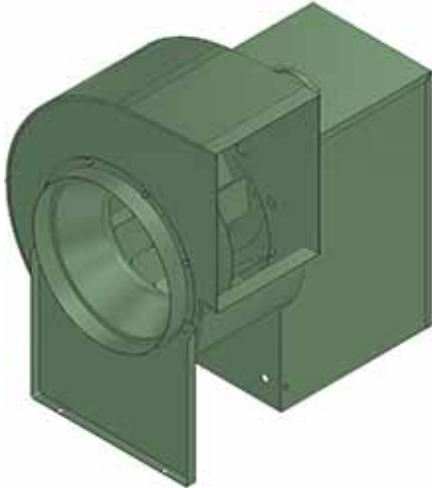
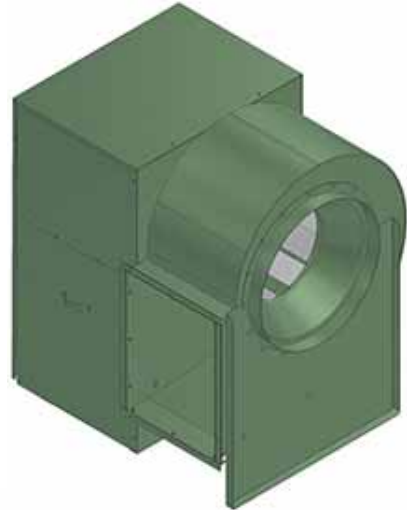


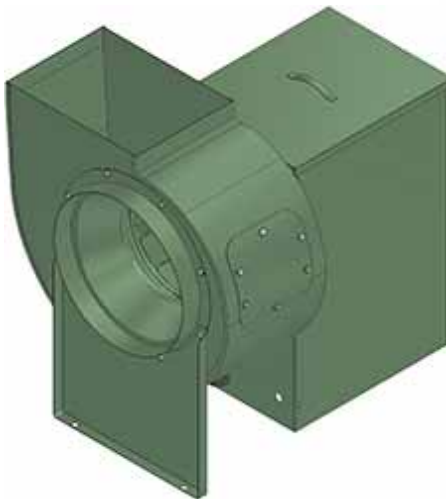
UTILITY BLOWERS



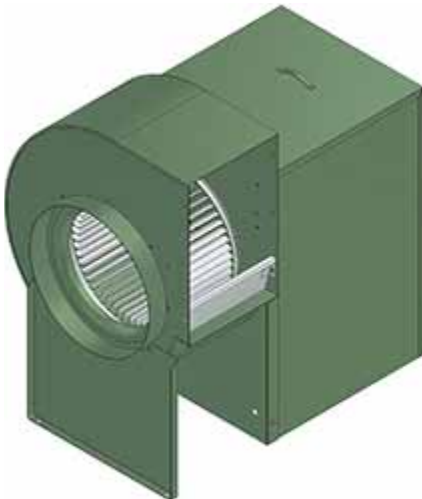
'BI' Series
Sizes 10" to 27"
Page 2



'BI' Series
Sizes 30" to 36"
Page 2



'BI-RM' Series
Restaurant Model
Page 3



'600' Series
Forward Curved
Page 14

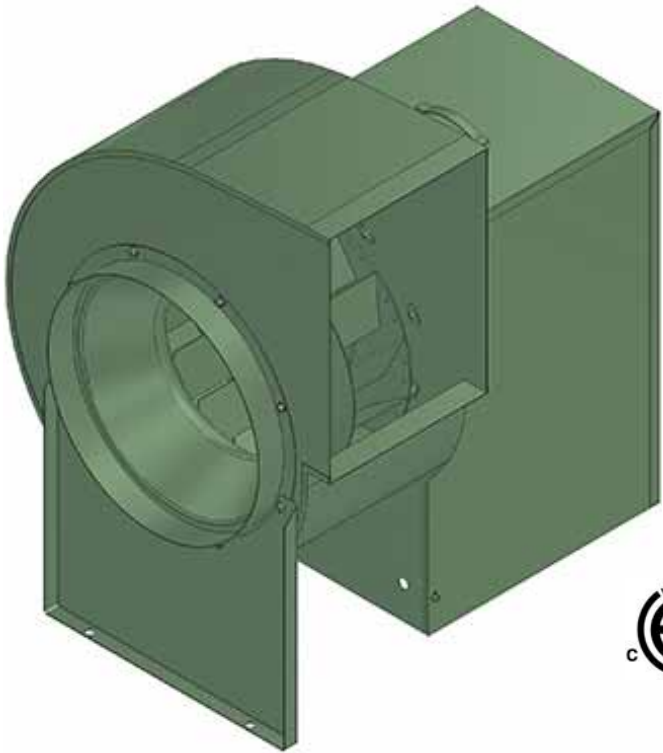


'400' Series
Framed
Page 12

'BI' Series Utility Blower

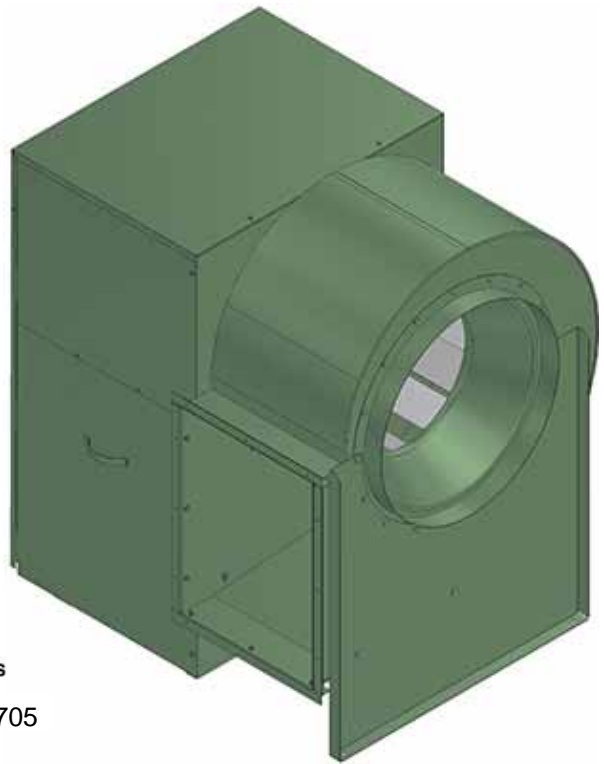
Sizes 10" to 27"

Top horizontal discharge



Sizes 30" to 36"

Bottom horizontal discharge



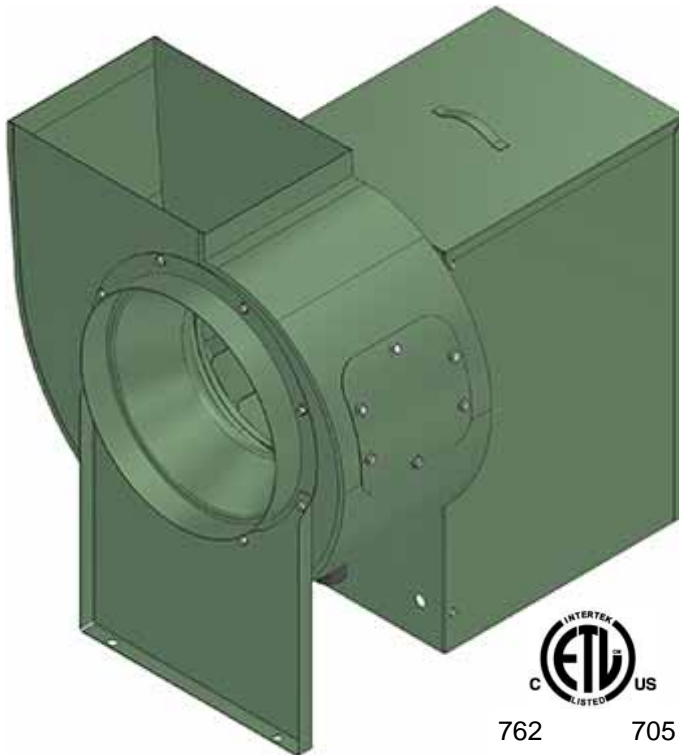
705

Standard Features - BI Models

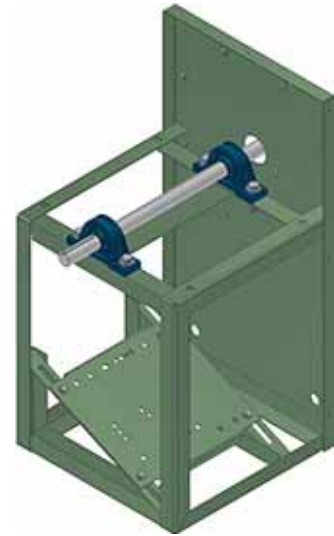
- Full AMCA CLASS I operation
- Complete range of sizes from 10" to 36"
- Vented motor and drive compartment cover, with handles, for safety and weather protection
- 16 gauge or heavier blower housing
- High solids enamel corrosion resistant paint finish
- Motor access from 3 sides
- Available in CCW or CW rotation
- Sloped, motor base makes motor mounting a simple task
- Outlet flanges on sizes BI-24 to BI-36
- Non-overloading backward inclined (BI) welded wheels
- **Aluminum** wheel - (AMCA type B classification for spark resistant construction) - available as an option
- Temperature Ratings - without a heat slinger 250 deg. F; with a heat slinger, steel wheel 400 deg. F, aluminum wheel 300 deg. F
- Heavy duty pillow block ball bearings
- Standard position can easily be field rotated to any of 8 discharge positions

See page 3 for Optional Accessories

'BI-RM' Utility Blower - Restaurant Model



'BI' & 'BI-RM' motor and drive compartment



(cover removed to illustrate 3 side motor access and sloped motor base for belt tensioning)

Standard Features - BI-RM Models

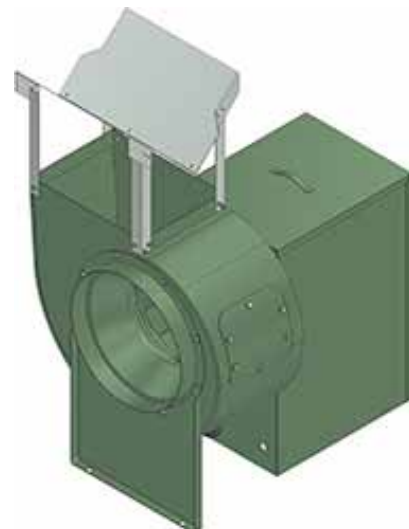
- UL 762 Listed for removal of cooking vapors
- Meets NFPA 96 guidelines
- Upblast discharge directs exhaust away from roof
- Integral handles for single person removal of motor and drive compartment cover
- Continuously welded 16 gauge or heavier blower housing
- Bolted clean out door
- 2" drain for easy removal of cleaning solutions
- Complete range of sizes from 10" to 36"
- Vinyl shaft seal

Optional Accessories (illustrated on pg 19)

- Aluminum wheel
- Back draft dampers
- Inlet & outlet screens
- Corrosion resistant finish (Heresite)
- Heat slinger
- Vibration isolation
- 'V' cap (rain cap)
- Shaft seal - vinyl ** or polyethylene
- Bolted clean out door **
- 2" drain **

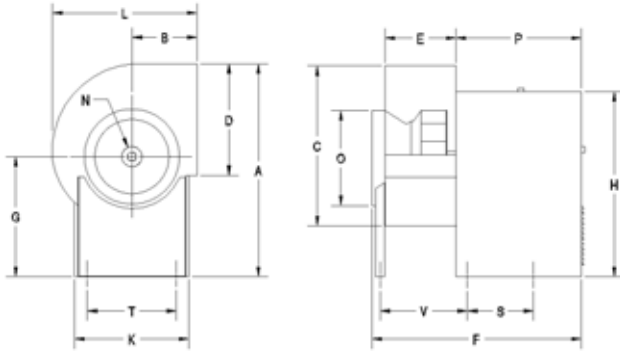
**Standard features on BI-RM models

'BI-RM' model with optional 'V' cap

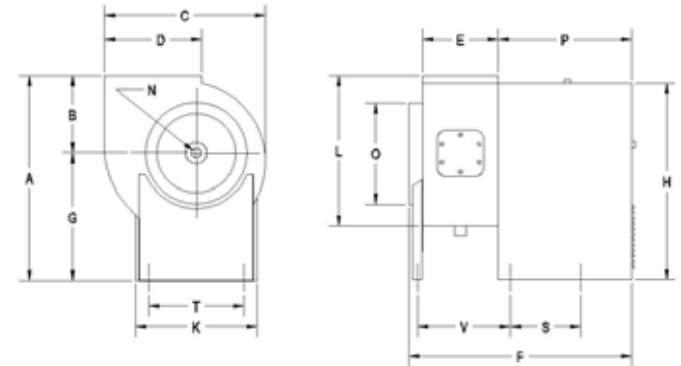


'BI' & 'BI-RM' Series Dimensions

**Models
BI-10
to
BI-27**



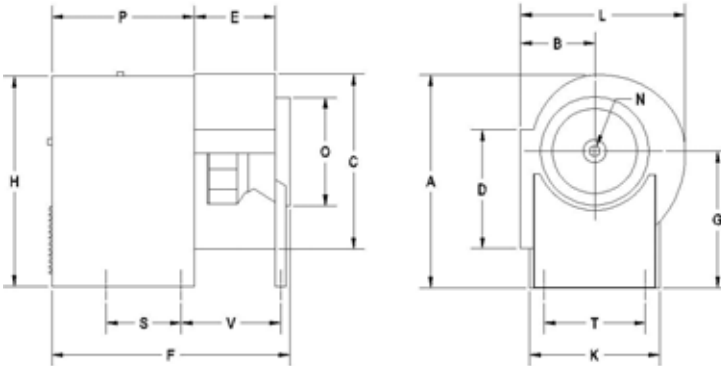
**Models
BI-RM-10
to
BI-RM-27**



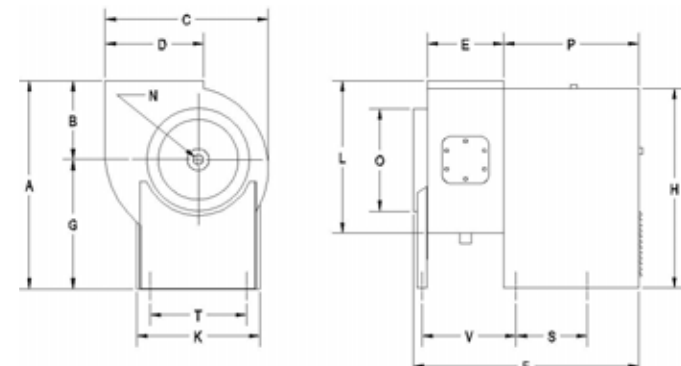
MODEL	A *	A **	B	C	D	E	F	G	H	K	L	N	O	P	S	T	V	UNIT WT (LBS.)
BI-10	26-3/4	23-5/8	8-3/8	18-15/16	11-5/16	8-1/4	27-3/4	15-1/4	21-5/16	13-3/16	17-3/8	3/4	11	17-1/4	11-3/4	11-7/16	-- --	78
BI-12	33-1/16	30-1/16	10	22-1/4	13	9-7/8	33-1/4	20-1/16	29-1/8	16-9/16	20-1/2	1	12-7/16	21-1/8	11-1/2	14-11/16	13-1/8	112
BI-13	34-5/16	30-13/16	10-3/4	24-1/2	14-3/8	10-3/4	34-1/8	20-1/16	29-1/8	16-9/16	22-1/2	1	14-3/8	21-1/8	11-1/2	14-11/16	14	134
BI-15	35-13/16	31-13/16	11-3/4	27	15-3/4	12	35-3/8	20-1/16	29-1/8	16-9/16	24-11/16	1	15-7/8	21-1/8	11-1/2	14-11/16	15-1/4	140
BI-16	39-3/8	34-11/16	12-11/16	29-7/8	17-5/8	13-1/8	36-1/2	22	31	16-9/16	26-7/8	1-3/16	17-3/8	21-1/8	11-1/2	14-11/16	16-3/8	162
BI-18	41-1/4	35-13/16	13-13/16	33	19-3/8	14-1/2	37-7/8	22	31	16-9/16	29-5/8	1-3/16	19-3/8	21-1/8	11-1/2	14-11/16	17-3/4	172
BI-20	49-1/8	42-15/16	14-15/16	36-1/4	21-1/4	15-3/4	46-7/16	28	40-7/8	25-1/4	32-1/4	1-3/16	21-1/4	27-11/16	14-5/8	22-3/4	19-3/4	289
BI-22	51-1/2	44-3/8	16-3/8	40-3/8	23-5/8	17-5/8	48-5/16	28	40-7/8	25-1/4	35-5/8	1-3/16	23-5/8	27-11/16	14-5/8	22-3/4	21-5/8	322
BI-24	57-7/8	49-13/16	17-13/16	44-3/8	26	19-3/8	51-5/16	32	46-1/2	28-15/16	39	1-7/16	26	28-15/16	18-5/16	25-1/2	23-3/8	385
BI-27	60-1/2	51-7/16	19-7/16	48-7/8	28-5/8	21-1/4	53-3/16	32	46-1/2	28-15/16	42-3/4	1-7/16	28-5/8	28-15/16	18-5/16	25-1/2	25-1/4	411

* STANDARD MODELS ** BI-RM MODELS

**Models
BI-30
to
BI-36**



**Models
BI-RM-30
to
BI-RM-36**



MODEL	A *	A **	B	C	D	E	F	G	H	K	L	N	O	P	S	T	V	UNIT WT. (LBS.)
BI-30	65-15/16	68-3/16	24-7/8	54-7/16	31-3/4	23-5/8	57-5/8	43-5/16	64-3/4	43-3/8	50-3/4	1-11/16	31-3/4	32	17	41	28-9/16	517
BI-33	68-3/16	68-9/16	25-1/4	59-3/4	34-7/8	26	60	43-5/16	64-3/4	43-3/8	53-3/4	1-11/16	35	32	17	41	30-15/16	607
BI-36	70-15/16	68-15/16	25-1/2	66-1/16	38-5/8	28-3/4	62-3/4	43-7/16	64-3/4	43-3/8	57	1-15/16	38-3/4	32	17	41	33-11/16	747

* STANDARD MODELS ** BI-RM MODELS

'BI' Series Performance Data



Delhi Industries Inc. certifies that the BI Series Utility Blowers shown herein are licenced to bear the AMCA seal. The ratings shown are based on tests and procedures performed in accordance with AMCA Publication 211 and comply with the requirements of the AMCA Certified Ratings Programme.

Model BI-10		MAXIMUM: 2 HP, 184T FRAME, 3800 RPM															
3/4" SHAFT		WHEEL DIA. = 10.50"															
		TIP SPEED : 2.75 x RPM = FPM															
CFM	OUTLET VELOCITY	1/2" SP		1" SP		1-1/2" SP		2" SP		2-1/2" SP		3" SP		4" SP		5" SP	
	FPM	RPM	BHP	RPM	BHP	RPM	BHP	RPM	BHP	RPM	BHP	RPM	BHP	RPM	BHP	RPM	BHP
300	477	1103	0.05	1528	0.12	1862	0.19	2146	0.28	2397	0.38	2626	0.49	3032	0.73	3392	0.99
500	796	1203	0.07	1583	0.16	1904	0.26	2177	0.36	2420	0.47	2643	0.59	3041	0.85	3394	1.14
700	1115	1382	0.12	1696	0.21	1972	0.32	2237	0.44	2476	0.58	2690	0.72	3076	1.01	3422	1.32
900	1433	1589	0.18	1869	0.29	2112	0.41	2332	0.53	2544	0.68	2754	0.84	3136	1.19	3472	1.54
1100	1752	1824	0.27	2064	0.40	2287	0.53	2488	0.67	2676	0.82	2855	0.98	3202	1.34	3535	1.74
1300	2071	2073	0.40	2278	0.54	2481	0.69	2669	0.84	2842	1.00	3008	1.18	3317	1.54	3612	1.95
1500	2389	2331	0.56	2512	0.72	2688	0.89	2863	1.06	3028	1.23	3182	1.41	3473	1.81	-	-
1700	2708	2593	0.76	2757	0.94	2914	1.13	3070	1.32	3224	1.51	3371	1.71	-	-	-	-
1900	3026	2859	1.01	3011	1.21	3152	1.41	3291	1.63	3431	1.85	-	-	-	-	-	-
2100	3345	3129	1.31	3268	1.53	3399	1.76	3526	1.98	-	-	-	-	-	-	-	-
2300	3664	3400	1.67	3530	1.92	-	-	-	-	-	-	-	-	-	-	-	-

Model BI-12		MAXIMUM: 3 HP, 215T FRAME, 3300 RPM															
1" SHAFT		WHEEL DIA. = 12.25"															
		TIP SPEED : 3.21 x RPM = FPM															
CFM	OUTLET VELOCITY	1/2" SP		1" SP		1-1/2" SP		2" SP		2-1/2" SP		3" SP		4" SP		5" SP	
	FPM	RPM	BHP	RPM	BHP	RPM	BHP	RPM	BHP	RPM	BHP	RPM	BHP	RPM	BHP	RPM	BHP
400	448	950	0.06	1321	0.14	1606	0.22	1849	0.32	2065	0.43	2262	0.55	2612	0.81	2922	1.10
600	673	1003	0.08	1349	0.17	1634	0.28	1875	0.40	2084	0.52	2275	0.65	2617	0.94	2922	1.25
800	897	1102	0.11	1397	0.21	1664	0.34	1900	0.47	2113	0.62	2305	0.77	2642	1.09	2940	1.43
1000	1121	1223	0.16	1492	0.27	1720	0.40	1937	0.55	2142	0.71	2330	0.88	2671	1.24	2972	1.63
1200	1346	1365	0.22	1595	0.35	1816	0.49	2005	0.64	2185	0.81	2368	0.99	2698	1.39	2996	1.81
1400	1570	1519	0.30	1720	0.44	1917	0.60	2104	0.77	2269	0.94	2426	1.12	2737	1.54	3027	1.99
1600	1794	1681	0.40	1859	0.55	2033	0.72	2205	0.91	2369	1.10	2519	1.30	2795	1.71	3068	2.18
1800	2019	1848	0.54	2008	0.69	2165	0.87	2318	1.07	2471	1.28	2618	1.50	2885	1.94	3129	2.41
2000	2243	2017	0.69	2164	0.86	2307	1.05	2446	1.26	2583	1.48	2721	1.72	2985	2.20	3219	2.69
2200	2467	2187	0.87	2325	1.07	2456	1.27	2585	1.48	2711	1.71	2836	1.96	3085	2.48	-	-
2400	2692	2359	1.09	2491	1.32	2611	1.52	2730	1.74	2848	1.98	2963	2.23	3190	2.79	-	-
2600	2916	2533	1.34	2659	1.60	2771	1.81	2882	2.04	2991	2.29	3099	2.55	-	-	-	-
2800	3140	2708	1.63	2828	1.92	2935	2.15	3038	2.39	3140	2.65	3241	2.92	-	-	-	-

Model BI-13		MAXIMUM: 5 HP, 215T FRAME, 3000 RPM															
1" SHAFT		WHEEL DIA. = 13.50"															
		TIP SPEED : 3.53 x RPM = FPM															
CFM	OUTLET VELOCITY	1/2" SP		1" SP		1-1/2" SP		2" SP		2-1/2" SP		3" SP		4" SP		5" SP	
	FPM	RPM	BHP	RPM	BHP	RPM	BHP	RPM	BHP	RPM	BHP	RPM	BHP	RPM	BHP	RPM	BHP
800	745	923	0.10	1220	0.21	1481	0.33	1701	0.46	1896	0.60	2073	0.76	2389	1.11	2671	1.50
1000	931	1000	0.14	1262	0.25	1497	0.39	1716	0.54	1910	0.70	2085	0.86	2398	1.22	2675	1.62
1200	1118	1096	0.18	1330	0.31	1538	0.45	1734	0.61	1924	0.79	2100	0.98	2411	1.36	2686	1.77
1400	1304	1205	0.24	1408	0.38	1604	0.53	1780	0.70	1948	0.88	2115	1.08	2426	1.51	2700	1.95
1600	1490	1321	0.31	1501	0.47	1678	0.63	1846	0.81	2001	1.00	2149	1.20	2441	1.66	2715	2.15
1800	1677	1441	0.39	1605	0.57	1763	0.75	1919	0.94	2068	1.14	2207	1.35	2470	1.80	2730	2.32
2000	1863	1565	0.49	1715	0.69	1859	0.89	2001	1.09	2141	1.30	2276	1.52	2524	1.99	2760	2.51
2200	2050	1690	0.61	1831	0.82	1963	1.04	2092	1.26	2221	1.49	2349	1.72	2590	2.21	2811	2.74
2400	2236	1818	0.75	1950	0.98	2073	1.21	2193	1.45	2311	1.70	2429	1.94	2660	2.46	2875	3.01
2600	2422	1947	0.91	2072	1.16	2187	1.41	2299	1.67	2409	1.93	2518	2.19	2735	2.74	2944	3.31
2800	2609	2077	1.10	2195	1.36	2305	1.63	2410	1.90	2513	2.18	2615	2.46	2817	3.04	-	-
3000	2795	2208	1.32	2320	1.59	2425	1.87	2524	2.16	2621	2.46	2717	2.76	2907	3.37	-	-
3200	2981	2340	1.56	2447	1.85	2547	2.14	2642	2.45	2734	2.77	2824	3.09	-	-	-	-
3400	3168	2472	1.83	2575	2.13	2670	2.45	2761	2.77	2849	3.11	2935	3.44	-	-	-	-
3600	3354	2606	2.14	2703	2.46	2795	2.78	2883	3.12	2967	3.47	-	-	-	-	-	-

Power rating bhp does not include transmission losses.
 Performance certified is for installation Type B - Free inlet, Ducted outlet.
 Performance ratings do not include the effects of appurtenances (accessories).

SI CONVERSION FACTOR
CFM x .472 = L/s SP x .249 = kPa

'BI' Series Performance Data



Delhi Industries Inc. certifies that the BI Series Utility Blowers shown herein are licenced to bear the AMCA seal. The ratings shown are based on tests and procedures performed in accordance with AMCA Publication 211 and comply with the requirements of the AMCA Certified Ratings Programme.

Model BI-15																		
MAXIMUM: 5 HP, 215T FRAME, 2700 RPM																		
1" SHAFT WHEEL DIA. = 15.00" TIP SPEED : 3.93 x RPM = FPM																		
CFM	OUTLET VELOCITY		1/2" SP		1" SP		1-1/2" SP		2" SP		2-1/2" SP		3" SP		4" SP		5" SP	
	FPM	RPM	BHP	RPM	BHP	RPM	BHP	RPM	BHP	RPM	BHP	RPM	BHP	RPM	BHP	RPM	BHP	
1300	990	921	0.18	1151	0.32	1353	0.49	1548	0.69	1722	0.89	1880	1.10	2161	1.54	2409	2.04	
1600	1219	1032	0.26	1229	0.42	1411	0.60	1577	0.80	1740	1.03	1896	1.27	2176	1.77	2423	2.29	
1900	1447	1156	0.35	1324	0.54	1489	0.74	1643	0.95	1784	1.18	1922	1.43	2192	1.99	2439	2.58	
2200	1676	1287	0.47	1435	0.69	1579	0.91	1721	1.15	1856	1.39	1981	1.65	2220	2.21	2456	2.85	
2500	1904	1422	0.62	1556	0.87	1684	1.12	1810	1.37	1935	1.64	2056	1.91	2278	2.49	2488	3.13	
2800	2133	1560	0.81	1684	1.08	1800	1.35	1913	1.63	2026	1.92	2138	2.22	2352	2.83	2548	3.49	
3100	2361	1700	1.04	1815	1.32	1922	1.63	2026	1.94	2128	2.25	2230	2.57	2431	3.22	2622	3.91	
3400	2590	1842	1.31	1950	1.62	2050	1.94	2146	2.28	2240	2.62	2333	2.96	2518	3.66	2700	4.39	
3700	2819	1985	1.62	2086	1.95	2180	2.30	2270	2.67	2358	3.03	2444	3.40	2615	4.15	-	-	
4000	3047	2129	1.99	2225	2.35	2314	2.72	2399	3.10	2481	3.50	2561	3.90	-	-	-	-	
4300	3276	2275	2.41	2365	2.79	2449	3.19	2530	3.60	2608	4.02	2684	4.44	-	-	-	-	
4600	3504	2421	2.90	2506	3.30	2587	3.72	2663	4.15	-	-	-	-	-	-	-	-	

Model BI-16																		
MAXIMUM: 7-1/2 HP, 215T FRAME, 2400 RPM																		
1-3/16" SHAFT WHEEL DIA. = 16.50" TIP SPEED : 4.32 x RPM = FPM																		
CFM	OUTLET VELOCITY		1/2" SP		1" SP		1-1/2" SP		2" SP		2-1/2" SP		3" SP		4" SP		5" SP	
	FPM	RPM	BHP	RPM	BHP	RPM	BHP	RPM	BHP	RPM	BHP	RPM	BHP	RPM	BHP	RPM	BHP	
1600	995	844	0.22	1051	0.40	1233	0.60	1408	0.84	1567	1.09	1710	1.34	1965	1.88	2191	2.49	
1900	1182	928	0.29	1110	0.49	1276	0.71	1429	0.95	1579	1.23	1722	1.52	1977	2.11	2201	2.73	
2200	1369	1020	0.38	1178	0.60	1333	0.84	1475	1.10	1607	1.37	1738	1.67	1989	2.34	2213	3.02	
2500	1556	1116	0.50	1258	0.73	1397	1.00	1532	1.28	1657	1.56	1774	1.87	2004	2.55	2225	3.31	
2800	1742	1216	0.63	1346	0.89	1470	1.17	1594	1.47	1714	1.79	1826	2.11	2035	2.79	2241	3.57	
3100	1929	1319	0.80	1439	1.07	1552	1.37	1664	1.69	1775	2.03	1884	2.38	2084	3.10	2271	3.87	
3400	2116	1422	0.99	1535	1.29	1640	1.61	1742	1.94	1844	2.30	1946	2.67	2140	3.44	2319	4.24	
3700	2303	1528	1.22	1633	1.54	1732	1.88	1827	2.23	1921	2.61	2014	3.00	2199	3.81	2374	4.66	
4000	2489	1634	1.48	1734	1.83	1827	2.19	1916	2.56	2003	2.95	2090	3.36	2263	4.22	-	-	
4300	2676	1741	1.78	1836	2.16	1924	2.54	2008	2.92	2090	3.33	2172	3.76	2333	4.66	-	-	
4600	2863	1849	2.12	1939	2.52	2023	2.93	2103	3.34	2181	3.76	2257	4.20	-	-	-	-	
4900	3050	1958	2.50	2044	2.93	2124	3.36	2201	3.80	2274	4.24	2347	4.70	-	-	-	-	
5200	3236	2067	2.93	2149	3.39	2226	3.85	2299	4.30	2370	4.77	-	-	-	-	-	-	
5500	3423	2177	3.41	2255	3.89	2329	4.38	2400	4.86	-	-	-	-	-	-	-	-	

Model BI-18																		
MAXIMUM: 7-1/2 HP, 215T FRAME, 2200 RPM																		
1-3/16" SHAFT WHEEL DIA. = 18.25" TIP SPEED : 4.78 x RPM = FPM																		
CFM	OUTLET VELOCITY		1/2" SP		1" SP		1-1/2" SP		2" SP		2-1/2" SP		3" SP		4" SP		5" SP	
	FPM	RPM	BHP	RPM	BHP	RPM	BHP	RPM	BHP	RPM	BHP	RPM	BHP	RPM	BHP	RPM	BHP	
2000	1025	772	0.29	956	0.50	1118	0.75	1274	1.05	1418	1.36	1547	1.67	1778	2.34	1982	3.08	
2300	1178	833	0.36	1000	0.60	1151	0.86	1290	1.15	1427	1.49	1556	1.84	1787	2.56	1990	3.32	
2600	1332	901	0.45	1049	0.71	1192	0.99	1322	1.29	1444	1.63	1566	2.00	1795	2.80	1998	3.61	
2900	1486	971	0.55	1106	0.84	1237	1.14	1362	1.46	1477	1.80	1587	2.17	1805	3.01	2007	3.90	
3200	1640	1044	0.67	1168	0.99	1288	1.32	1406	1.66	1517	2.02	1621	2.39	1820	3.22	2016	4.17	
3500	1793	1118	0.82	1233	1.16	1344	1.51	1453	1.87	1560	2.25	1661	2.64	1848	3.48	2030	4.43	
3800	1947	1194	0.98	1302	1.35	1405	1.72	1506	2.11	1606	2.51	1704	2.93	1885	3.79	2054	4.74	
4100	2101	1271	1.17	1373	1.56	1469	1.96	1563	2.38	1657	2.80	1750	3.23	1927	4.14	2089	5.10	
4400	2255	1348	1.38	1446	1.80	1536	2.23	1625	2.67	1712	3.11	1799	3.57	1970	4.52	2129	5.52	
4700	2409	1426	1.63	1519	2.06	1606	2.52	1689	2.99	1771	3.46	1853	3.94	2015	4.93	2171	5.97	
5000	2562	1505	1.90	1594	2.36	1677	2.84	1756	3.33	1834	3.83	1911	4.34	2064	5.37	-	-	
5300	2716	1584	2.21	1670	2.69	1749	3.19	1825	3.71	1899	4.24	1972	4.77	2116	5.85	-	-	
5600	2870	1664	2.54	1746	3.05	1822	3.57	1895	4.12	1965	4.67	2035	5.23	2172	6.36	-	-	
5900	3024	1744	2.92	1823	3.44	1897	3.99	1966	4.56	2034	5.14	2101	5.73	-	-	-	-	
6200	3177	1825	3.33	1901	3.88	1972	4.45	2039	5.04	2104	5.65	2168	6.26	-	-	-	-	
6500	3331	1906	3.78	1979	4.36	2047	4.95	2113	5.56	2175	6.19	-	-	-	-	-	-	
6800	3485	1987	4.27	2057	4.87	2124	5.49	2187	6.12	-	-	-	-	-	-	-	-	

Power rating bhp does not include transmission losses.
 Performance certified is for installation Type B - Free inlet, Ducted outlet.
 Performance ratings do not include the effects of appurtenances (accessories).

SI CONVERSION FACTOR
CFM x .472 = L/s SP x .249 = kPa

'BI' Series Performance Data



Delhi Industries Inc. certifies that the BI Series Utility Blowers shown herein are licenced to bear the AMCA seal. The ratings shown are based on tests and procedures performed in accordance with AMCA Publication 211 and comply with the requirements of the AMCA Certified Ratings Programme.

Model BI-20 MAXIMUM: 7-1/2 HP, 254T FRAME, 1950 RPM
 1-3/16" SHAFT WHEEL DIA. = 20.00" TIP SPEED : 5.24 x RPM = FPM

CFM	OUTLET VELOCITY	1/2" SP		1" SP		1-1/2" SP		2" SP		2-1/2" SP		3" SP		4" SP		5" SP	
	FPM	RPM	BHP	RPM	BHP	RPM	BHP	RPM	BHP	RPM	BHP	RPM	BHP	RPM	BHP	RPM	BHP
2250	968	677	0.29	858	0.54	1020	0.83	1160	1.15	1289	1.49	1410	1.86	1628	2.63	1819	3.46
2500	1075	713	0.34	877	0.61	1035	0.90	1172	1.23	1296	1.60	1413	1.98	1628	2.80	1821	3.66
2750	1183	752	0.40	903	0.68	1050	0.99	1187	1.33	1308	1.70	1421	2.11	1629	2.96	1820	3.87
3000	1290	793	0.46	933	0.76	1069	1.09	1202	1.44	1322	1.82	1432	2.23	1634	3.13	1821	4.08
3250	1398	835	0.53	967	0.84	1093	1.19	1218	1.56	1338	1.95	1447	2.37	1644	3.29	1824	4.28
3500	1505	879	0.62	1003	0.94	1121	1.31	1237	1.69	1353	2.10	1462	2.53	1656	3.46	1832	4.49
3750	1613	924	0.71	1041	1.05	1153	1.43	1261	1.83	1370	2.26	1477	2.70	1670	3.65	1843	4.70
4000	1721	969	0.81	1081	1.18	1187	1.56	1289	1.98	1391	2.43	1493	2.89	1685	3.85	1856	4.92
4250	1828	1016	0.92	1122	1.31	1223	1.71	1321	2.14	1416	2.61	1512	3.08	1700	4.08	1871	5.16
4500	1936	1063	1.05	1165	1.45	1261	1.87	1354	2.32	1445	2.79	1535	3.29	1716	4.32	1886	5.42
4750	2043	1110	1.19	1208	1.61	1300	2.05	1390	2.51	1476	3.00	1562	3.51	1733	4.58	1901	5.70
5000	2151	1157	1.34	1252	1.78	1341	2.24	1426	2.71	1510	3.21	1592	3.74	1754	4.85	1916	6.00
5250	2258	1205	1.51	1297	1.96	1382	2.44	1464	2.93	1545	3.45	1623	3.98	1778	5.13	1934	6.32
5500	2366	1254	1.69	1342	2.16	1425	2.66	1504	3.17	1581	3.70	1657	4.25	1806	5.42	-	-
5750	2473	1303	1.89	1388	2.37	1468	2.89	1544	3.42	1619	3.96	1692	4.53	1835	5.73	-	-
6000	2581	1352	2.10	1435	2.60	1512	3.14	1586	3.69	1658	4.25	1729	4.83	1867	6.05	-	-
6250	2689	1401	2.33	1481	2.85	1556	3.40	1628	3.97	1698	4.55	1766	5.15	1900	6.39	-	-
6500	2796	1450	2.58	1529	3.12	1601	3.68	1671	4.27	1738	4.87	1805	5.48	1934	6.76	-	-
6750	2904	1500	2.85	1576	3.40	1647	3.98	1714	4.59	1780	5.21	1844	5.84	-	-	-	-
7000	3011	1550	3.13	1624	3.70	1693	4.30	1758	4.93	1822	5.57	1885	6.22	-	-	-	-
7250	3119	1600	3.44	1671	4.03	1739	4.64	1803	5.29	1865	5.95	1926	6.61	-	-	-	-
7500	3226	1651	3.76	1720	4.37	1786	5.01	1848	5.66	1908	6.34	-	-	-	-	-	-
7750	3334	1701	4.11	1768	4.74	1832	5.39	1894	6.06	-	-	-	-	-	-	-	-
8000	3442	1752	4.47	1817	5.13	1880	5.79	1939	6.48	-	-	-	-	-	-	-	-
8250	3549	1803	4.86	1865	5.54	1927	6.22	-	-	-	-	-	-	-	-	-	-
8500	3657	1854	5.27	1914	5.97	-	-	-	-	-	-	-	-	-	-	-	-

Model BI-22 MAXIMUM: 10 HP, 254T FRAME, 1750 RPM
 1-3/16" SHAFT WHEEL DIA. = 22.25" TIP SPEED : 5.83 x RPM = FPM

CFM	OUTLET VELOCITY	1/2" SP		1" SP		1-1/2" SP		2" SP		2-1/2" SP		3" SP		4" SP		5" SP	
	FPM	RPM	BHP	RPM	BHP	RPM	BHP	RPM	BHP	RPM	BHP	RPM	BHP	RPM	BHP	RPM	BHP
2500	864	581	0.31	758	0.60	905	0.94	1036	1.33	1158	1.73	1268	2.16	1462	3.07	1629	4.05
2800	968	610	0.36	772	0.67	917	1.03	1043	1.42	1159	1.86	1268	2.31	1465	3.27	1635	4.29
3100	1072	641	0.42	788	0.75	931	1.12	1054	1.53	1165	1.98	1270	2.46	1464	3.46	1637	4.54
3400	1175	675	0.49	811	0.84	944	1.22	1067	1.64	1175	2.11	1276	2.60	1465	3.66	1638	4.79
3700	1279	711	0.57	837	0.93	960	1.34	1080	1.78	1188	2.25	1287	2.76	1468	3.86	1637	5.04
4000	1383	748	0.65	867	1.04	980	1.47	1094	1.92	1201	2.40	1299	2.92	1476	4.06	1639	5.28
4300	1487	786	0.75	898	1.16	1005	1.60	1110	2.08	1215	2.58	1312	3.11	1487	4.26	1645	5.53
4600	1590	825	0.86	931	1.29	1032	1.75	1131	2.25	1229	2.77	1326	3.31	1499	4.49	1655	5.78
4900	1694	865	0.98	966	1.43	1062	1.91	1155	2.42	1247	2.97	1339	3.53	1513	4.73	1666	6.04
5200	1798	905	1.12	1001	1.59	1093	2.08	1181	2.61	1268	3.18	1356	3.77	1526	4.99	1679	6.33
5500	1902	946	1.26	1038	1.76	1126	2.27	1210	2.82	1293	3.40	1375	4.01	1539	5.28	1692	6.63
5800	2005	987	1.43	1076	1.94	1160	2.48	1241	3.04	1320	3.64	1398	4.27	1554	5.59	1705	6.96
6100	2109	1028	1.61	1114	2.14	1195	2.70	1272	3.28	1348	3.90	1423	4.54	1571	5.90	1719	7.32
6400	2213	1070	1.80	1153	2.35	1230	2.94	1305	3.54	1379	4.17	1450	4.83	1591	6.24	1733	7.70
6700	2317	1112	2.01	1192	2.59	1267	3.19	1339	3.82	1410	4.47	1479	5.14	1614	6.58	1749	8.09
7000	2420	1154	2.24	1232	2.84	1305	3.47	1374	4.11	1442	4.78	1509	5.47	1639	6.94	-	-
7300	2524	1197	2.49	1273	3.10	1343	3.76	1410	4.43	1476	5.11	1540	5.82	1666	7.32	-	-
7600	2628	1240	2.76	1313	3.39	1381	4.07	1446	4.76	1510	5.47	1573	6.19	1694	7.72	-	-
7900	2732	1283	3.05	1354	3.70	1420	4.39	1484	5.11	1545	5.84	1606	6.59	1724	8.15	-	-
8200	2835	1326	3.36	1395	4.03	1460	4.74	1521	5.48	1581	6.24	1640	7.01	-	-	-	-
8500	2939	1370	3.69	1437	4.38	1500	5.12	1560	5.88	1618	6.66	1675	7.45	-	-	-	-
8800	3043	1413	4.04	1478	4.76	1540	5.51	1598	6.29	1655	7.10	1710	7.91	-	-	-	-
9100	3147	1457	4.41	1520	5.16	1580	5.93	1637	6.73	1692	7.56	1746	8.40	-	-	-	-
9400	3250	1501	4.81	1562	5.58	1621	6.37	1677	7.20	1730	8.04	-	-	-	-	-	-
9700	3354	1545	5.24	1604	6.03	1662	6.84	1716	7.68	-	-	-	-	-	-	-	-
10000	3458	1589	5.69	1647	6.50	1703	7.33	-	-	-	-	-	-	-	-	-	-

Power rating bhp does not include transmission losses.
 Performance certified is for installation Type B - Free inlet, Ducted outlet.
 Performance ratings do not include the effects of appurtenances (accessories).

SI CONVERSION FACTOR

CFM x .472 = L/s SP x .249 = kPa

'BI' Series Performance Data



Delhi Industries Inc. certifies that the BI Series Utility Blowers shown herein are licenced to bear the AMCA seal. The ratings shown are based on tests and procedures performed in accordance with AMCA Publication 211 and comply with the requirements of the AMCA Certified Ratings Programme.

Model BI-24																	
MAXIMUM: 15 HP, 254T FRAME, 1600 RPM																	
1-7/16" SHAFT WHEEL DIA. = 24.50" TIP SPEED : 6.41 x RPM = FPM																	
CFM	OUTLET VELOCITY	1/2" SP		1" SP		1-1/2" SP		2" SP		2-1/2" SP		3" SP		4" SP		5" SP	
	FPM	RPM	BHP	RPM	BHP	RPM	BHP	RPM	BHP	RPM	BHP	RPM	BHP	RPM	BHP	RPM	BHP
3000	857	526	0.37	688	0.72	822	1.14	941	1.60	1050	2.09	1151	2.60	1328	3.70	1483	4.89
3500	1000	562	0.46	705	0.84	836	1.27	950	1.76	1053	2.29	1151	2.85	1329	4.03	1486	5.29
4000	1143	603	0.56	729	0.98	853	1.44	965	1.94	1064	2.50	1157	3.10	1329	4.36	1486	5.70
4500	1286	647	0.69	761	1.13	872	1.63	981	2.16	1079	2.73	1169	3.35	1334	4.69	1486	6.12
5000	1429	693	0.84	799	1.31	899	1.84	999	2.41	1096	3.00	1185	3.63	1345	5.02	1491	6.53
5500	1572	742	1.01	839	1.52	932	2.08	1022	2.68	1113	3.31	1201	3.96	1359	5.38	1501	6.94
6000	1715	791	1.21	882	1.76	969	2.34	1052	2.97	1135	3.64	1218	4.33	1376	5.78	1515	7.38
6500	1858	841	1.45	927	2.03	1008	2.64	1087	3.30	1163	4.00	1240	4.73	1392	6.23	1531	7.86
7000	2000	893	1.71	974	2.33	1050	2.98	1124	3.66	1196	4.39	1267	5.15	1410	6.74	1548	8.40
7500	2143	944	2.01	1022	2.66	1094	3.35	1164	4.07	1232	4.81	1299	5.61	1432	7.27	1564	9.00
8000	2286	997	2.35	1071	3.04	1139	3.76	1206	4.51	1271	5.29	1334	6.10	1459	7.83	1583	9.64
8500	2429	1050	2.73	1120	3.45	1186	4.21	1249	5.00	1311	5.80	1371	6.64	1489	8.43	-	-
9000	2572	1103	3.15	1171	3.90	1234	4.70	1294	5.53	1353	6.37	1411	7.24	1523	9.07	-	-
9500	2715	1156	3.61	1222	4.40	1282	5.24	1340	6.10	1396	6.98	1452	7.88	1560	9.76	-	-
10000	2858	1210	4.13	1273	4.95	1331	5.82	1387	6.72	1441	7.64	1494	8.57	1598	10.50	-	-
10500	3001	1265	4.69	1325	5.55	1381	6.45	1435	7.39	1487	8.35	1538	9.32	-	-	-	-
11000	3144	1319	5.30	1377	7.20	1432	7.14	1484	8.11	1534	9.10	1583	10.10	-	-	-	-
11500	3287	1374	5.97	1429	7.91	1483	7.88	1533	8.88	1581	9.92	-	-	-	-	-	-
12000	3430	1429	6.70	1482	8.68	1534	8.68	1583	9.72	-	-	-	-	-	-	-	-
12500	3573	1485	7.48	1535	9.51	1585	9.54	-	-	-	-	-	-	-	-	-	-
13000	3716	1540	8.33	1589	10.39	-	-	-	-	-	-	-	-	-	-	-	-

Model BI-27																	
MAXIMUM: 15 HP, 254T FRAME, 1450 RPM																	
1-7/16" SHAFT WHEEL DIA. = 27.00" TIP SPEED : 7.07 x RPM = FPM																	
CFM	OUTLET VELOCITY	1/2" SP		1" SP		1-1/2" SP		2" SP		2-1/2" SP		3" SP		4" SP		5" SP	
	FPM	RPM	BHP	RPM	BHP	RPM	BHP	RPM	BHP	RPM	BHP	RPM	BHP	RPM	BHP	RPM	BHP
4000	946	482	0.51	615	0.96	732	1.47	834	2.06	928	2.68	1016	3.33	1173	4.72	1310	6.21
4500	1065	510	0.61	630	1.09	744	1.62	843	2.23	933	2.89	1017	3.58	1173	5.06	1312	6.62
5000	1183	541	0.73	650	1.23	756	1.80	855	2.42	942	3.10	1023	3.83	1174	5.39	1311	7.04
5500	1302	573	0.85	674	1.39	771	2.00	867	2.64	954	3.33	1033	4.08	1178	5.71	1312	7.45
6000	1420	607	0.99	701	1.57	790	2.20	879	2.89	965	3.60	1044	4.37	1185	6.05	1315	7.86
6500	1538	642	1.13	730	1.78	813	2.43	896	3.15	978	3.90	1056	4.68	1196	6.40	1322	8.27
7000	1657	677	1.30	760	2.02	839	2.68	916	3.43	992	4.23	1068	5.04	1207	6.78	1331	8.70
7500	1775	714	1.51	792	2.27	867	2.98	939	3.74	1010	4.57	1082	5.43	1219	7.20	1342	9.15
8000	1893	750	1.75	825	2.53	896	3.30	965	4.07	1032	4.93	1098	5.83	1231	7.68	1354	9.65
8500	2012	788	2.04	859	2.80	927	3.66	992	4.45	1056	5.31	1119	6.24	1244	8.19	1366	10.20
9000	2130	825	2.38	894	3.08	959	4.03	1021	4.87	1082	5.74	1141	6.69	1260	8.72	1378	10.80
9500	2248	863	2.77	930	3.40	991	4.41	1051	5.33	1109	6.22	1166	7.17	1279	9.26	1391	11.40
10000	2367	901	3.21	965	3.76	1025	4.81	1082	5.81	1138	6.74	1193	7.70	1300	9.83	1407	12.10
10500	2485	940	3.69	1002	4.17	1059	5.21	1114	6.31	1168	7.31	1220	8.29	1323	10.40	1425	12.80
11000	2604	979	4.22	1038	4.63	1094	5.65	1147	6.82	1198	7.90	1249	8.92	1348	11.10	1445	13.50
11500	2722	1018	4.78	1075	5.15	1129	6.12	1180	7.35	1230	8.52	1279	9.60	1375	11.80	-	-
12000	2840	1057	5.38	1113	5.74	1165	6.63	1214	7.89	1262	9.15	1310	10.30	1402	12.60	-	-
12500	2959	1096	6.02	1150	6.40	1201	7.21	1249	8.45	1295	9.80	1341	11.10	1431	13.40	-	-
13000	3077	1136	6.70	1188	7.13	1237	7.84	1284	9.06	1329	10.50	1373	11.80	-	-	-	-
13500	3195	1176	7.41	1226	7.94	1274	8.54	1319	9.71	1363	11.10	1406	12.60	-	-	-	-
14000	3314	1216	8.17	1264	8.82	1311	9.32	1355	10.40	1398	11.90	1440	13.40	-	-	-	-
14500	3432	1256	8.96	1303	9.76	1348	10.20	1391	11.20	1433	12.60	-	-	-	-	-	-
15000	3550	1296	9.81	1341	10.80	1386	11.10	1428	12.10	-	-	-	-	-	-	-	-
15500	3669	1336	10.70	1380	11.80	1423	12.20	-	-	-	-	-	-	-	-	-	-
16000	3787	1377	11.60	1419	12.90	-	-	-	-	-	-	-	-	-	-	-	-

Power rating bhp does not include transmission losses.
 Performance certified is for installation Type B - Free inlet, Ducted outlet.
 Performance ratings do not include the effects of appurtenances (accessories).

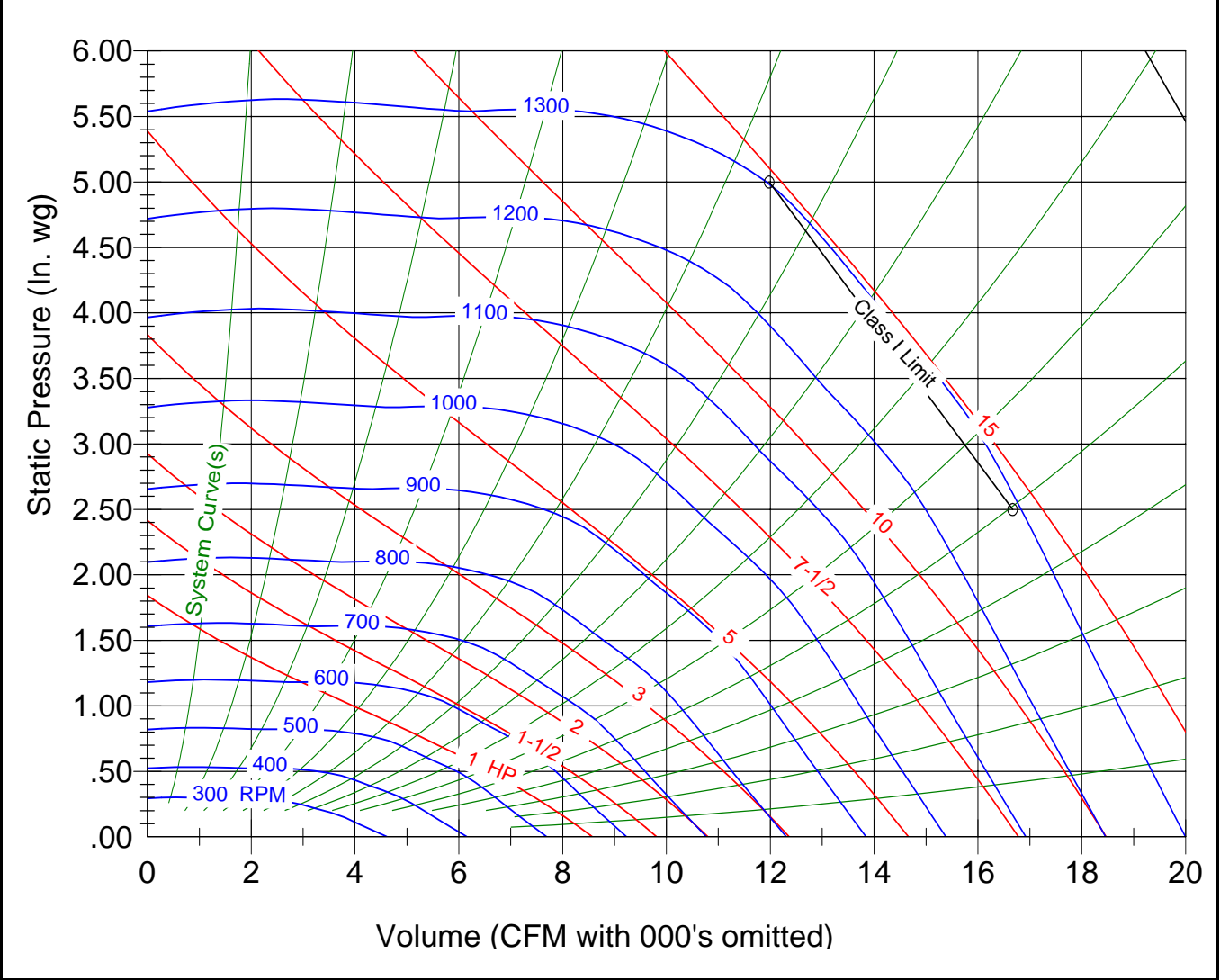
SI CONVERSION FACTOR
CFM x .472 = L/s SP x .249 = kPa

'BI' Series Performance Data



Delhi Industries Inc. certifies that the BI Series Utility Blowers shown herein are licenced to bear the AMCA seal. The ratings shown are based on tests and procedures performed in accordance with AMCA Publication 211 and comply with the requirements of the AMCA Certified Ratings Programme.

Model BI-30		MAXIMUM: 15 HP, 284T FRAME, 1300 RPM				1-11/16" SHAFT				WHEEL DIA. = 30.00"				TIP SPEED : 7.85 x RPM = FPM			
CFM	OUTLET VELOCITY FPM	1/2" RPM	SP BHP	1" RPM	SP BHP	1-1/2" RPM	SP BHP	2" RPM	SP BHP	2-1/2" RPM	SP BHP	3" RPM	SP BHP	4" RPM	SP BHP	5" RPM	SP BHP
5000	959	459	0.65	573	1.20	683	1.86	782	2.61	875	3.40	959	4.22	1105	5.97	1232	7.89
6000	1151	503	0.86	603	1.46	699	2.16	791	2.95	877	3.81	958	4.74	1107	6.65	1237	8.67
7000	1343	552	1.13	646	1.82	726	2.53	808	3.36	888	4.27	965	5.23	1107	7.34	1238	9.55
8000	1535	607	1.46	690	2.22	766	3.01	836	3.85	908	4.79	978	5.80	1113	8.00	1237	10.40
9000	1727	665	1.87	735	2.70	810	3.59	874	4.46	936	5.42	1000	6.47	1125	8.74	1245	11.22
10000	1919	724	2.39	786	3.24	854	4.22	919	5.22	975	6.18	1031	7.24	1145	9.58	1257	12.16
11000	2111	785	3.01	841	3.89	899	4.95	962	6.02	1019	7.12	1070	8.17	1172	10.58	1277	13.19
12000	2303	845	3.71	898	4.66	950	5.74	1007	6.92	1062	8.10	1114	9.29	1207	11.67	1301	14.40
13000	2495	905	4.52	956	5.56	1004	6.66	1053	7.93	1107	9.18	1157	10.47	1248	12.99	-	-
14000	2687	967	5.45	1015	6.59	1060	7.73	1105	9.01	1152	10.39	1201	11.74	1293	14.55	-	-
15000	2879	1028	6.52	1076	7.78	1117	8.95	1159	10.24	1201	11.68	1247	13.15	-	-	-	-
16000	3071	1090	7.72	1136	9.10	1175	10.33	1214	11.65	1254	13.10	1293	14.68	-	-	-	-
17000	3263	1152	9.07	1197	10.53	1235	11.87	1271	13.23	-	-	-	-	-	-	-	-
18000	3455	1215	10.59	1257	12.12	1295	13.60	-	-	-	-	-	-	-	-	-	-



Power rating bhp does not include transmission losses.
 Performance certified is for installation type B-Free Inlet, Ducted Outlet.
 Performance ratings do not include the effects of appurtenances (accessories).

SI CONVERSION FACTOR
 CFM x .472 = L/s SP x .249 = kPa

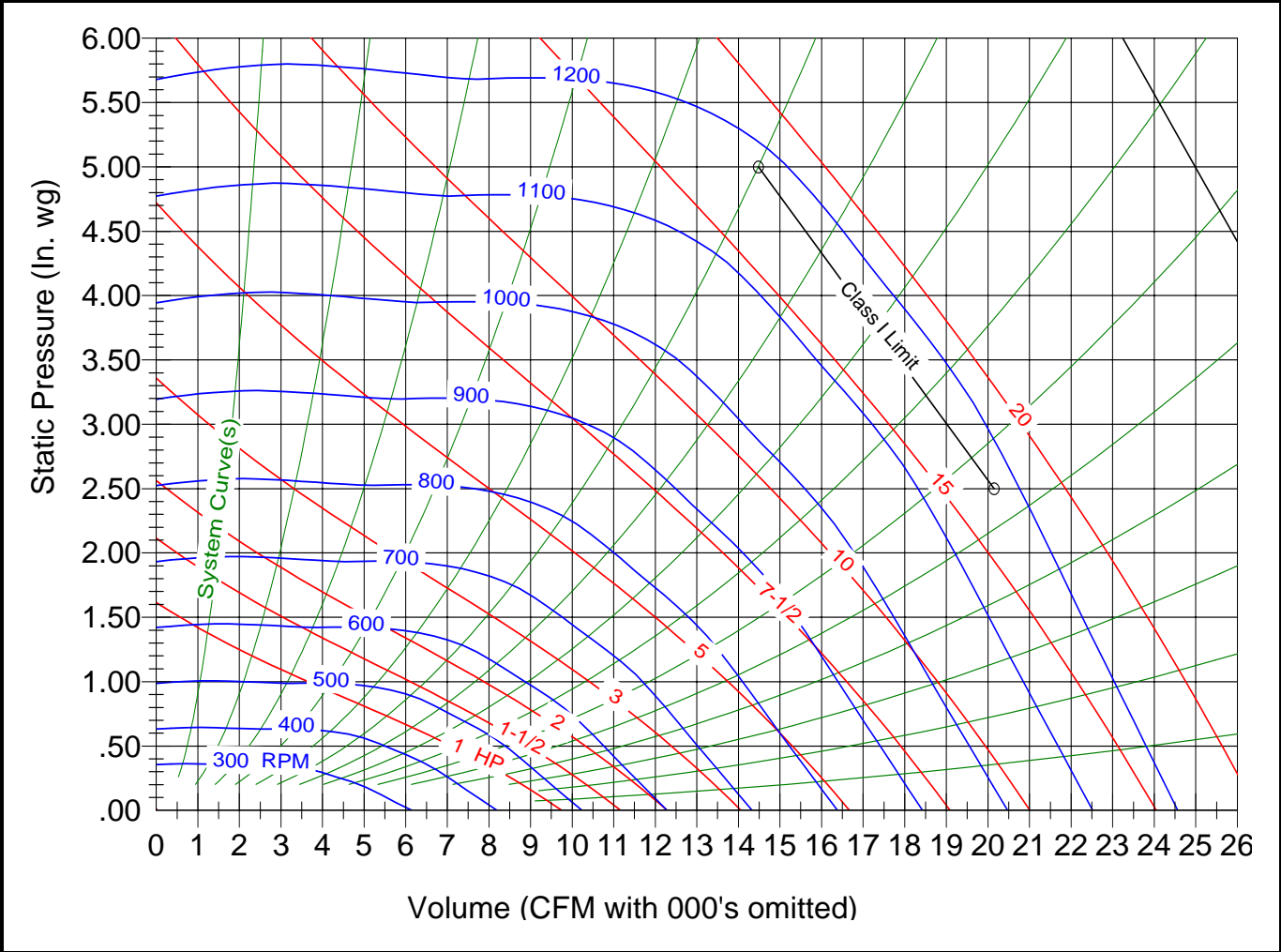
'BI' Series Performance Data



Delhi Industries Inc. certifies that the BI Series Utility Blowers shown herein are licensed to bear the AMCA seal. The ratings shown are based on tests and procedures performed in accordance with AMCA Publication 211 and comply with the requirements of the AMCA Certified Ratings Programme.

Model BI-33 MAXIMUM: 20 HP, 284T FRAME, 1180 RPM
 1-11/16" SHAFT WHEEL DIA. = 33.00" TIP SPEED : 8.64 x RPM = FPM

CFM	OUTLET VELOCITY FPM	1/2" RPM	SP BHP	1" RPM	SP BHP	1-1/2" RPM	SP BHP	2" RPM	SP BHP	2-1/2" RPM	SP BHP	3" RPM	SP BHP	4" RPM	SP BHP	5" RPM	SP BHP
6000	952	416	0.78	520	1.44	620	2.24	711	3.14	796	4.09	871	5.08	1004	7.19	1120	9.50
7000	1111	449	0.99	541	1.69	631	2.53	717	3.48	796	4.51	874	5.60	1006	7.87	1124	10.28
8000	1270	484	1.23	572	2.02	649	2.88	727	3.86	803	4.94	874	6.09	1006	8.56	1125	11.15
9000	1429	523	1.52	605	2.41	675	3.29	745	4.32	814	5.42	881	6.62	1008	9.22	1125	12.01
10000	1588	565	1.88	638	2.83	707	3.82	768	4.84	831	5.99	894	7.21	1014	9.90	1126	12.84
11000	1746	609	2.32	672	3.33	740	4.41	798	5.47	854	6.64	911	7.91	1024	10.66	1133	13.68
12000	1905	654	2.83	711	3.86	773	5.04	832	6.24	883	7.39	934	8.68	1040	11.50	1142	14.61
13000	2064	699	3.43	752	4.49	807	5.75	864	7.02	916	8.30	963	9.58	1058	12.49	1155	15.61
14000	2223	745	4.11	794	5.22	843	6.52	897	7.89	949	9.28	995	10.63	1083	13.53	1173	16.77
15000	2382	790	4.86	837	6.05	883	7.37	931	8.84	982	10.30	1029	11.81	1112	14.73	-	-
16000	2540	836	5.71	881	6.99	924	8.33	967	9.86	1015	11.42	1061	13.00	1143	16.12	-	-
17000	2699	882	6.66	926	8.05	966	9.42	1007	10.96	1049	12.65	1094	14.29	1178	17.71	-	-
18000	2858	928	7.72	971	9.23	1009	10.63	1047	12.20	1086	13.93	1128	15.69	-	-	-	-
19000	3017	974	8.89	1017	10.53	1052	11.98	1089	13.57	1125	15.31	1162	17.21	-	-	-	-
20000	3176	1021	10.19	1062	11.91	1097	13.46	1131	15.08	1165	16.84	-	-	-	-	-	-
21000	3334	1068	11.61	1107	13.41	1142	15.09	1174	16.74	-	-	-	-	-	-	-	-
22000	3493	1115	13.17	1153	15.05	1187	16.86	-	-	-	-	-	-	-	-	-	-



Power rating bhp does not include transmission losses.
 Performance certified is for installation type B-Free Inlet, Ducted Outlet.
 Performance ratings do not include the effects of appurtenances (accessories).

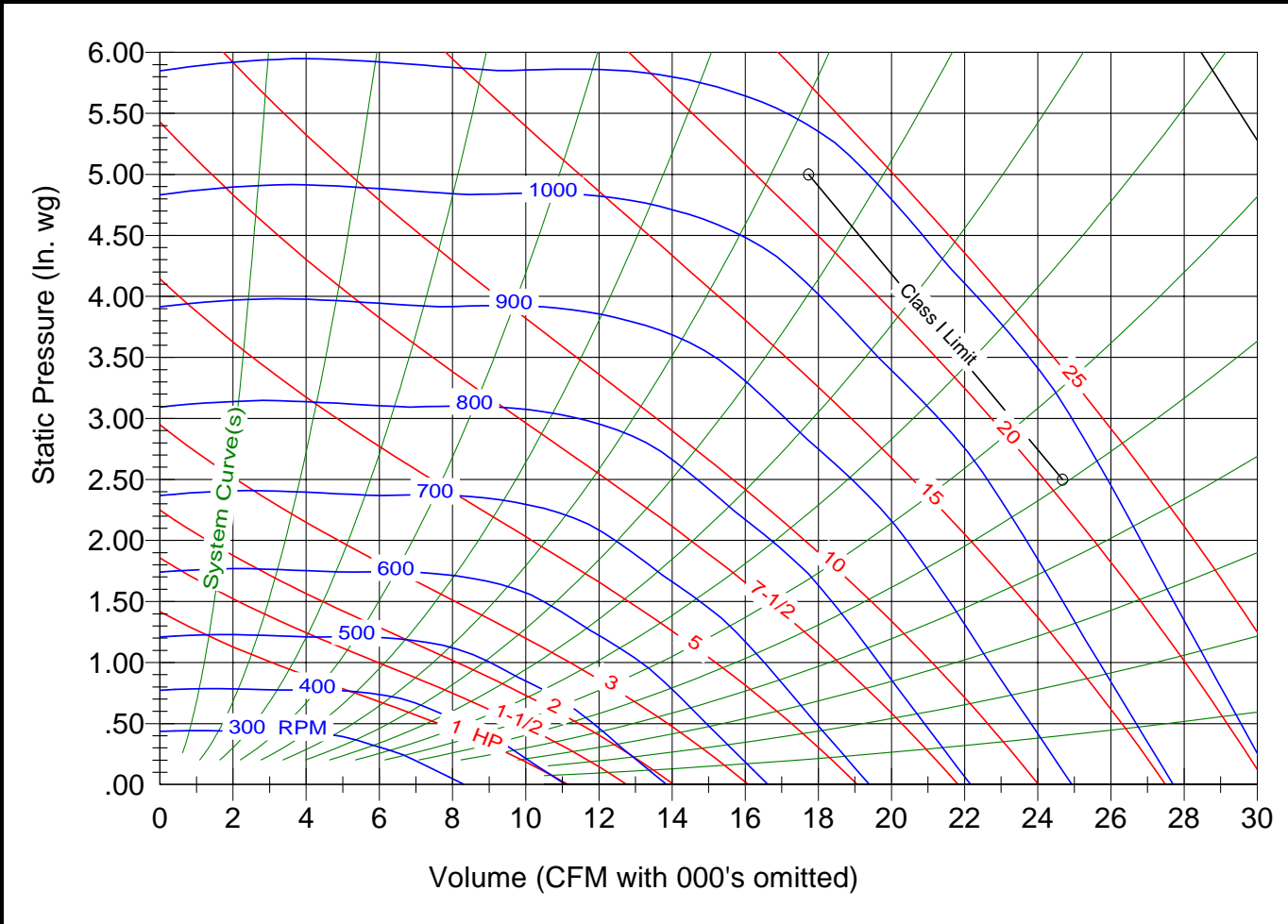
SI CONVERSION FACTOR
CFM x .472 = L/s SP x .249 = kPa

'BI' Series Performance Data



Delhi Industries Inc. certifies that the BI Series Utility Blowers shown herein are licensed to bear the AMCA seal. The ratings shown are based on tests and procedures performed in accordance with AMCA Publication 211 and comply with the requirements of the AMCA Certified Ratings Programme.

Model BI-36		MAXIMUM: 25 HP, 284T FRAME, 1070 RPM				1-15/16" SHAFT				WHEEL DIA. = 36.50"				TIP SPEED : 9.56 x RPM = FPM			
CFM	OUTLET VELOCITY FPM	1/2" RPM	SP BHP	1" RPM	SP BHP	1-1/2" RPM	SP BHP	2" RPM	SP BHP	2-1/2" RPM	SP BHP	3" RPM	SP BHP	4" RPM	SP BHP	5" RPM	SP BHP
8000	1037	392	1.08	479	1.92	565	2.93	645	4.06	719	5.29	788	6.55	910	9.23	1014	12.13
9000	1167	417	1.31	499	2.20	576	3.23	651	4.41	722	5.69	788	7.07	910	9.93	1017	12.94
10000	1296	443	1.57	522	2.55	590	3.61	660	4.81	727	6.14	791	7.56	910	10.62	1017	13.82
11000	1426	473	1.86	547	2.94	610	4.02	673	5.27	736	6.63	797	8.10	911	11.27	1017	14.68
12000	1556	504	2.22	571	3.36	633	4.53	690	5.79	748	7.18	806	8.68	916	11.95	1018	15.52
13000	1685	536	2.63	596	3.84	658	5.12	711	6.38	763	7.82	818	9.34	922	12.70	1022	16.33
14000	1815	568	3.10	623	4.35	682	5.72	735	7.09	783	8.50	832	10.10	932	13.48	1027	17.23
15000	1945	602	3.65	652	4.92	707	6.38	760	7.88	806	9.31	851	10.88	944	14.37	1035	18.19
16000	2074	635	4.26	682	5.56	732	7.11	784	8.67	830	10.25	873	11.80	958	15.37	1046	19.21
17000	2204	669	4.94	714	6.29	759	7.88	808	9.53	855	11.23	896	12.86	976	16.40	1059	20.35
18000	2334	702	5.67	745	7.10	788	8.71	833	10.47	879	12.23	922	14.05	997	17.56	-	-
19000	2463	736	6.48	778	8.00	818	9.63	859	11.49	903	13.32	945	15.20	1020	18.89	-	-
20000	2593	770	7.37	810	8.99	848	10.64	887	12.52	928	14.48	970	16.44	1044	20.36	-	-
21000	2723	804	8.35	844	10.07	880	11.76	916	13.66	954	15.74	994	17.76	1069	21.96	-	-
22000	2852	838	9.42	877	11.26	911	12.98	946	14.90	981	17.02	1019	19.17	-	-	-	-
23000	2982	873	10.58	911	12.55	944	14.31	977	16.25	1010	18.39	1045	20.68	-	-	-	-
24000	3112	907	11.84	945	13.90	976	15.75	1008	17.72	1040	19.88	-	-	-	-	-	-
25000	3241	942	13.20	978	15.34	1009	17.31	1039	19.31	1070	21.49	-	-	-	-	-	-
26000	3371	976	14.67	1012	16.89	1043	18.99	-	-	-	-	-	-	-	-	-	-

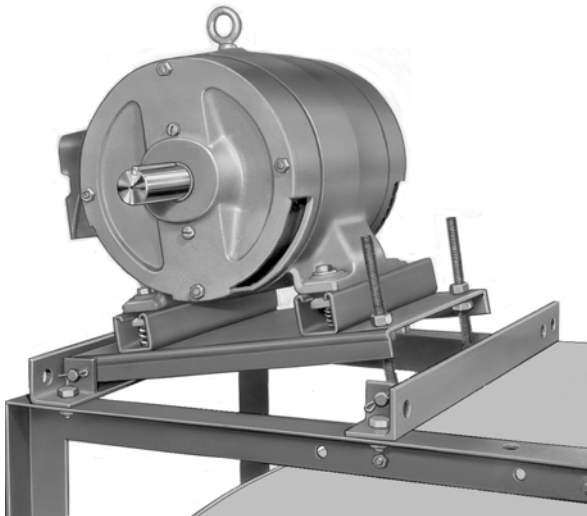
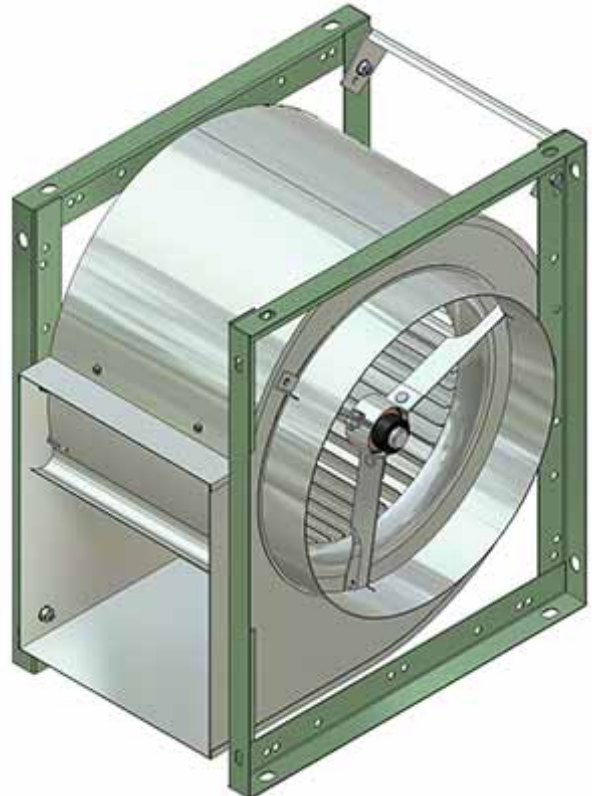


Power rating bhp does not include transmission losses.
 Performance certified is for installation type B-Free Inlet, Ducted Outlet.
 Performance ratings do not include the effects of appurtenances (accessories).

SI CONVERSION FACTOR
 CFM x .472 = L/s SP x .249 = kPa

'400' Series FC Exhauster

- Universal frame allows for choice of discharge position
- Multiple choice for motor mounting location with each discharge position
- Motor mounting bracket and hardware included with models 407 to 415
- Motor mounting bracket/plate assembly and hardware are supplied with model 418
- Heavy duty ball bearings suitable for -65 to +250 deg. F on all models
- Spider bearing brackets on models 407 to 418
- Pillow block bearings with T bar support, on models 420, 422 & 425
- Shafts for 420, 422 & 425 models are keywayed for wheels and pulleys (407 to 418 models for pulleys only)



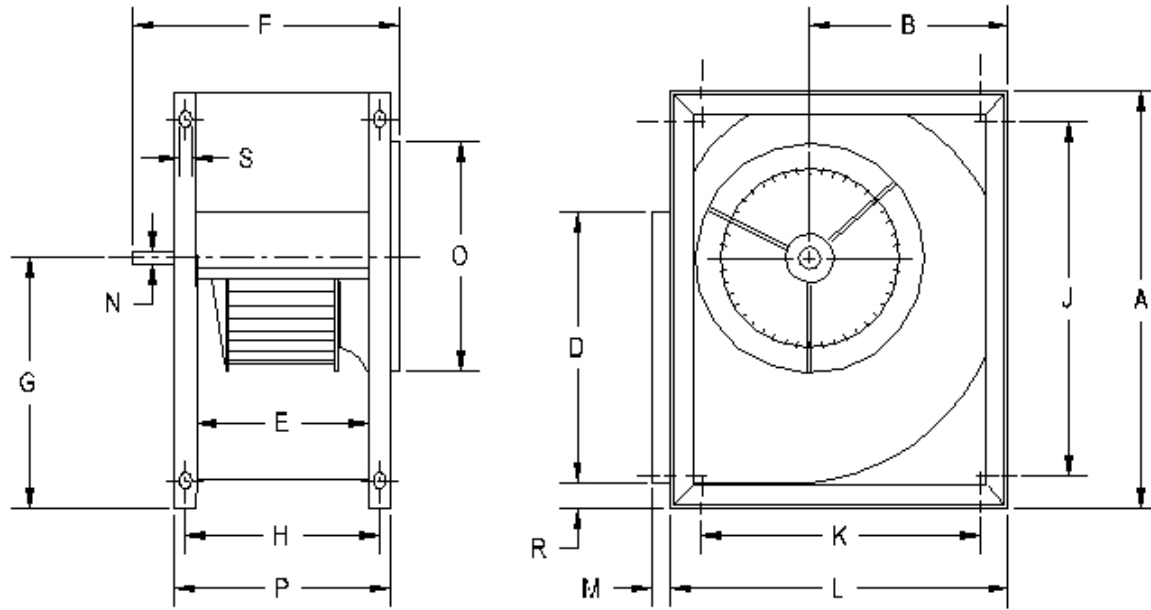
**Optional 1 to 15 HP
Motor Platform for
Models 420, 422 & 425**

Optional Accessories

(illustrated on page 19)

- Back draft dampers
- Inlet & outlet screens
- Corrosion resistant finishes
- Vibration isolation
- Belt guard

'400' Series Dimensions

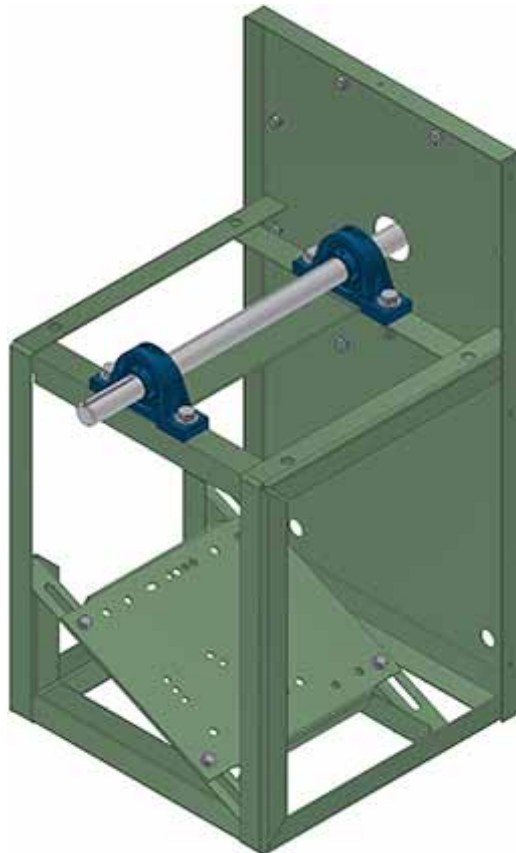
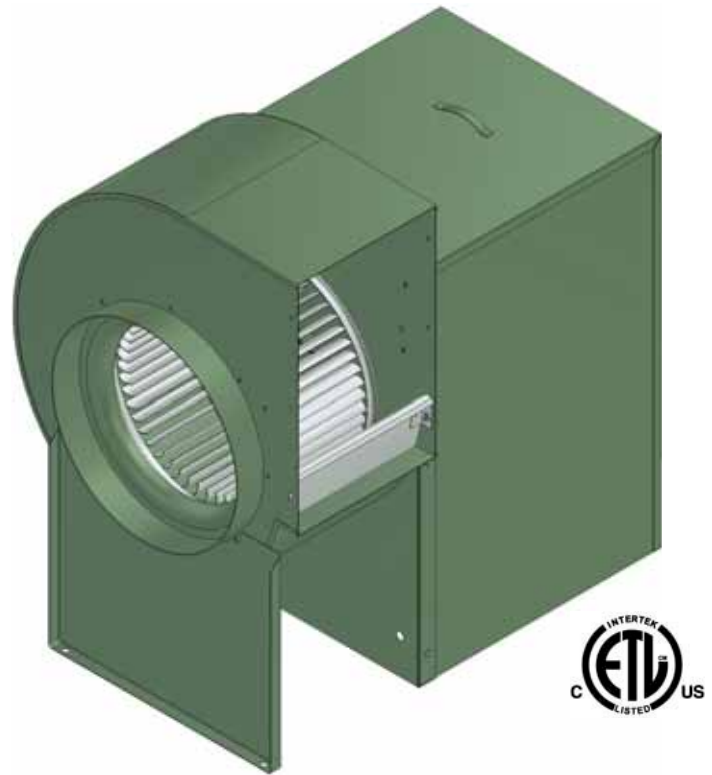


DIMENSIONS (inches)

MODEL	A	B	D	E	F	G	H	J	K	L	M	N	O	P	R	S	WHEEL DIA.	WHEEL WIDTH	UNIT WT. (LBS.)
407	14-1/4	6-1/2	8-3/8	6-7/8	11-5/8	8-5/8	8	11-11/16	8-7/8	11-3/4	3/4	3/4	9	9	1-1/2	7/16	8-1/16	4-15/16	16
409	17-1/4	7-15/16	10-1/4	9-3/16	13-15/16	10-1/8	10-5/16	14-5/8	11-3/4	14-1/2	3/4	3/4	10	11-5/16	1-1/2	7/16	9-13/16	7-3/16	23
410	19-1/8	9	11-3/8	9-3/16	13-15/16	11-1/4	10-5/16	16-1/4	13-1/2	16-1/4	3/4	3/4	12	11-5/16	1-1/2	7/16	11-1/8	7-3/16	26
412	22-1/4	10-9/16	13-1/2	9-3/16	13-15/16	13	10-5/16	19-5/8	16-1/4	19	3/4	3/4	14	11-5/16	1-1/2	7/16	12-7/8	7-3/16	30
415	29-3/4	14-3/4	17	12-1/2	17-3/8	18-1/8	13-3/4	27-1/4	22-5/8	25-1/4	3/4	1	17	14-3/4	1-1/2	7/16	15-1/2	9-9/16	56
418	30-3/4	14-15/16	18-7/8	14	20-3/8	17-3/4	15-5/8	28-1/2	24	26-1/2	3/4	1	18	17-1/4	1-1/2	7/16	18-1/2	10-13/16	87
420	38	18-5/16	24-3/4	15-3/4	24-1/4	22-9/16	17-1/4	32-7/16	25-7/16	31-1/4	1-1/2	1-3/16	21	19-3/4	2	5/8	20-7/16	10-1/4	189
422	41-1/2	20-1/16	27-1/4	17-1/8	25-5/8	24-5/8	18-5/8	35-31/32	28-15/32	34-1/4	1-1/2	1-3/16	22-1/2	21-1/8	2	5/8	22-1/8	11-1/4	214
425	46-3/4	22-5/8	31-1/4	19-5/8	28-1/8	27-3/4	21-1/8	41-7/32	32-17/32	38-3/8	1-1/2	1-3/16	26-3/4	23-5/8	2	5/8	25-1/4	13	252

'600' Series FC Utility Blower

- Standard top horizontal discharge position can easily be field rotated to any of 8 positions
- Outlet flanges on models 620, 622 & 625
- Vented motor and drive compartment cover, with handles, for safety and weather protection
- Available in CW or CCW rotation
- Shafts for 620, 622 & 625 models are keywayed for wheels and pulleys (610 to 618 models for pulleys only)
- Heavy duty pillow block ball bearings



Motor and drive compartment with cover removed to illustrate 3 side motor access and sloped motor base for belt tensioning

Optional Accessories

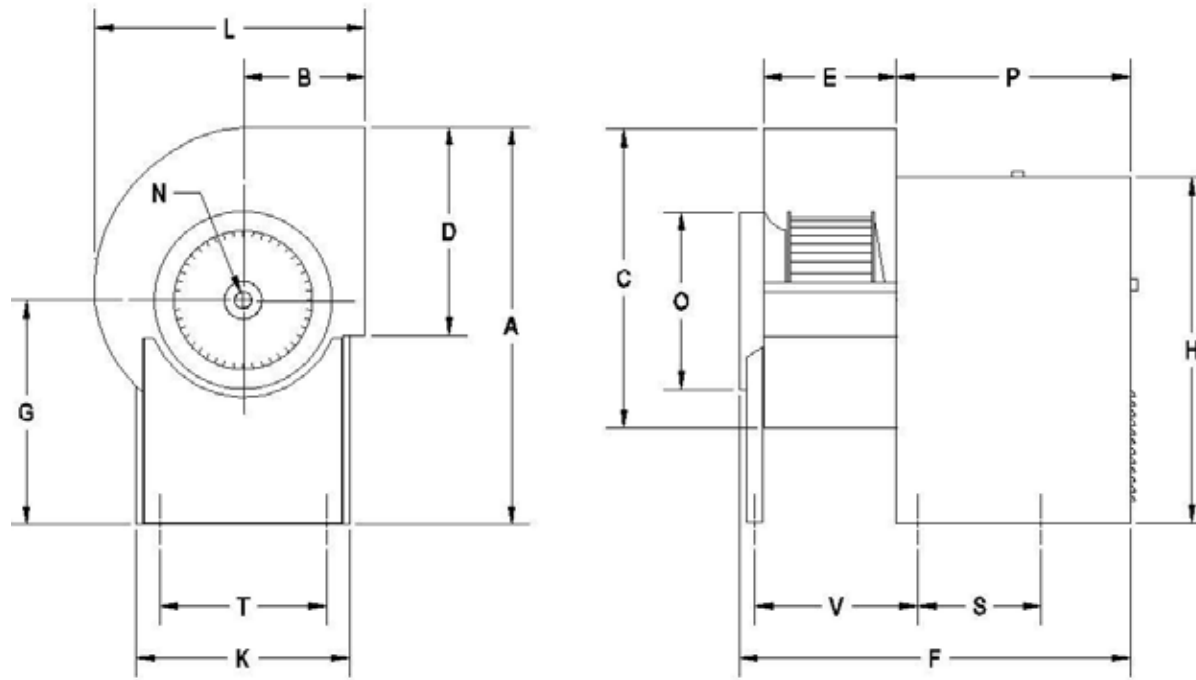
(illustrated on page 19)

- Back draft dampers
- Inlet & outlet screens
- Corrosion resistant finishes
- Bolted clean out door
- 2" drain fitting
- Heat slinger
- Shaft seal - vinyl or polyethylene
- Vibration isolation



Delhi Industries Inc. certifies that the **600 Series** Utility Blower shown herein are licenced to bear the AMCA seal. The ratings shown are based on tests and procedures performed in accordance with AMCA Publication 211 and comply with the requirements of the AMCA Certified Ratings Programme.

'600' Series Dimensions



DIMENSIONS (inches)

MODEL	A	B	C	D	E	F	G	H	K	L	N	O	P	S	T	V	WHEEL DIA.	WHEEL WIDTH	UNIT WT. (LBS.)
610	24-13/16	8	17-7/16	11-3/8	9-3/16	28-9/16	15-1/16	21-5/16	13-3/16	16-3/4	3/4	12	17-1/4	11-3/4	11-7/16	---	11-1/8	7-3/16	57
612	26-9/16	9-1/8	20-1/4	13-7/16	9-3/16	28-9/16	15-1/16	21-5/16	13-3/16	19-1/2	3/4	14	17-1/4	11-3/4	11-7/16	---	12-7/8	7-3/16	60
615	36-3/4	11-1/4	28-1/16	17	12-1/2	35-7/8	20-1/16	29-1/8	16-9/16	25-15/16	1	17	21-1/8	11-1/2	14-11/16	15-5/8	15-1/2	9-9/16	124
618	36-5/16	12-3/8	28-7/8	18-7/8	14	37-3/8	20-1/16	29-1/8	16-9/16	27	1	18	21-1/8	11-1/2	14-11/16	17-1/8	18-1/2	10-13/16	144
620	48-9/16	14-7/16	35-3/4	24-3/4	15-3/4	46-7/16	28	40-7/8	25-1/4	32-7/16	1-3/16	21	27-11/16	14-5/8	22-1/2	18-7/8	20-7/16	10-1/4	278
622	50-9/16	15-11/16	39-3/8	27-1/4	17-1/8	47-13/16	28	40-7/8	25-1/4	35-1/2	1-3/16	22-1/2	27-11/16	14-5/8	22-1/2	20-1/4	22-1/8	11-1/4	296
625	53-11/16	17-1/4	44-3/8	31-1/4	19-5/8	50-5/16	28	40-7/8	25-1/4	39-5/8	1-3/16	26-3/4	27-11/16	14-5/8	22-1/2	22-3/4	25-1/4	13	329

'400' & '600' Series Performance Data



Delhi Industries Inc. certifies that the **600 Series** Utility Blower shown herein are licenced to bear the AMCA seal. The ratings shown are based on tests and procedures performed in accordance with AMCA Publication 211 and comply with the requirements of the AMCA Certified Ratings Programme.

Model 407																	
MAXIMUM: 1 HP, 182T FRAME, 2800 RPM																	
3/4" SHAFT WHEEL DIA. = 8.06" TIP SPEED = 2.07 x RPM																	
CFM	OUTLET VELOCITY	1/8" SP		1/4" SP		1/2" SP		3/4" SP		1" SP		1-1/2" SP		2" SP		2-1/2" SP	
	FPM	RPM	BHP	RPM	BHP	RPM	BHP	RPM	BHP	RPM	BHP	RPM	BHP	RPM	BHP	RPM	BHP
200	500	577	0.02	745	0.03	1007	0.08	1218	0.13	1399	0.20	1707	0.35	1969	0.54	2202	0.75
300	750	691	0.03	833	0.05	1066	0.10	1261	0.15	1432	0.22	1727	0.38	1982	0.57	2209	0.78
400	1000	825	0.06	947	0.08	1153	0.13	1331	0.19	1490	0.26	1770	0.42	2015	0.61	2234	0.83
500	1250	963	0.09	1078	0.12	1260	0.17	1422	0.24	1569	0.31	1833	0.48	2066	0.68	2277	0.90
600	1500	1104	0.15	1213	0.18	1382	0.24	1529	0.30	1665	0.38	1911	0.56	2132	0.76	-	-
700	1750	1245	0.24	1351	0.26	1515	0.33	1649	0.40	1774	0.47	2004	0.66	2213	0.87	-	-
800	2000	1386	0.35	1493	0.36	1650	0.44	1778	0.52	1894	0.60	2109	0.78	-	-	-	-
900	2250	1530	0.50	1633	0.51	1786	0.58	1914	0.67	2022	0.76	2223	0.95	-	-	-	-
1000	2500	1675	0.67	1774	0.70	1925	0.76	2048	0.85	2157	0.95	-	-	-	-	-	-

Model 409																	
MAXIMUM: 2 HP, 213T FRAME, 2250 RPM																	
3/4" SHAFT WHEEL DIA. = 9.81" TIP SPEED = 2.47 x RPM																	
CFM	OUTLET VELOCITY	1/8" SP		1/4" SP		1/2" SP		3/4" SP		1" SP		1-1/2" SP		2" SP		2-1/2" SP	
	FPM	RPM	BHP	RPM	BHP	RPM	BHP	RPM	BHP	RPM	BHP	RPM	BHP	RPM	BHP	RPM	BHP
300	458	437	0.01	603	0.03	834	0.06	1010	0.09	1158	0.13	1406	0.21	1614	0.30	1797	0.39
400	611	465	0.02	615	0.04	850	0.08	1027	0.12	1176	0.16	1424	0.26	1633	0.36	1817	0.46
500	764	520	0.04	633	0.05	863	0.09	1042	0.14	1192	0.20	1442	0.30	1652	0.42	1836	0.54
600	917	577	0.05	675	0.07	874	0.11	1055	0.17	1206	0.23	1458	0.35	1669	0.48	1854	0.62
700	1070	638	0.08	731	0.10	893	0.14	1066	0.20	1219	0.26	1473	0.40	1685	0.55	1870	0.70
800	1223	699	0.11	788	0.13	930	0.18	1082	0.24	1230	0.30	1486	0.45	1699	0.62	1886	0.78
900	1376	762	0.15	848	0.18	981	0.23	1106	0.28	1245	0.35	1498	0.51	1713	0.68	1901	0.86
1000	1529	827	0.20	908	0.23	1040	0.29	1149	0.34	1266	0.41	1508	0.56	1725	0.75	1914	0.95
1100	1682	892	0.25	969	0.29	1096	0.35	1201	0.42	1302	0.48	1524	0.64	1736	0.82	1927	1.03
1200	1834	958	0.32	1032	0.36	1155	0.43	1258	0.50	1349	0.57	1545	0.73	1748	0.91	1938	1.12
1300	1987	1025	0.40	1096	0.44	1215	0.52	1316	0.60	1403	0.67	1574	0.83	1766	1.02	1948	1.21
1400	2140	1093	0.49	1160	0.54	1275	0.63	1373	0.71	1462	0.79	1618	0.96	1787	1.15	1964	1.35
1500	2293	1161	0.59	1225	0.65	1337	0.75	1433	0.83	1519	0.92	1668	1.09	1818	1.28	1984	1.50
1600	2446	1230	0.71	1291	0.77	1399	0.88	1493	0.97	1576	1.07	1723	1.25	1861	1.44	2006	1.66
1700	2599	1299	0.84	1357	0.90	1461	1.02	1553	1.13	1635	1.23	1781	1.42	1909	1.62	2041	1.84
1800	2752	1369	0.99	1424	1.06	1525	1.19	1614	1.30	1695	1.41	1839	1.61	1963	1.82	-	-
1900	2905	1438	1.15	1492	1.23	1589	1.36	1676	1.49	1755	1.61	1896	1.83	-	-	-	-
2000	3058	1508	1.33	1559	1.41	1653	1.56	1738	1.70	1816	1.82	-	-	-	-	-	-

Model 410 & 610																	
MAXIMUM: 2 HP, 184T FRAME, 2000 RPM																	
3/4" SHAFT WHEEL DIA. = 11.13" TIP SPEED = 2.83 x RPM																	
CFM	OUTLET VELOCITY	1/8" SP		1/4" SP		1/2" SP		1" SP		1-1/2" SP		2" SP		2-1/2" SP		3" SP	
	FPM	RPM	BHP	RPM	BHP	RPM	BHP	RPM	BHP	RPM	BHP	RPM	BHP	RPM	BHP	RPM	BHP
500	688	385	0.03	495	0.04	688	0.07	984	0.16	1207	0.25	1392	0.36	1553	0.48	1698	0.61
700	964	453	0.05	542	0.07	700	0.11	973	0.20	1199	0.32	1392	0.44	1558	0.56	1707	0.71
900	1240	532	0.10	608	0.12	742	0.17	978	0.26	1190	0.39	1380	0.54	1548	0.69	1702	0.84
1100	1515	618	0.16	683	0.19	802	0.25	1009	0.37	1198	0.48	1374	0.63	1538	0.80	1690	0.98
1300	1791	707	0.25	764	0.28	870	0.36	1056	0.50	1226	0.64	1386	0.77	1539	0.93	1682	1.12
1500	2066	799	0.37	849	0.41	944	0.49	1116	0.66	1270	0.82	1416	0.98	1555	1.13	1690	1.29
1700	2342	893	0.52	938	0.57	1023	0.66	1182	0.86	1324	1.04	1458	1.22	1587	1.40	1712	1.58
1900	2617	988	0.72	1028	0.77	1106	0.88	1252	1.09	1387	1.30	1511	1.50	1630	1.70	1746	1.91
2100	2893	1084	0.95	1121	1.01	1191	1.13	1327	1.37	1454	1.60	1571	1.83	-	-	-	-
2300	3169	1181	1.24	1214	1.30	1279	1.43	1405	1.69	1524	1.95	-	-	-	-	-	-
2500	3444	1278	1.58	1309	1.65	1369	1.79	-	-	-	-	-	-	-	-	-	-

Power rating bhp does not include transmission losses.

600 Series performance certified is for installation Type B - Free inlet, Ducted outlet.
Performance ratings do not include the effects of appurtenances (accessories).

SI CONVERSION FACTOR

CFM x .472 = L/s SP x .249 = kPa

'400' & '600' Series Performance Data



Delhi Industries Inc. certifies that the **600 Series** Utility Blower shown herein are licenced to bear the AMCA seal. The ratings shown are based on tests and procedures performed in accordance with AMCA Publication 211 and comply with the requirements of the AMCA Certified Ratings Programme.

CFM		OUTLET VELOCITY		1/8" SP		1/4" SP		1/2" SP		1" SP		1-1/2" SP		2" SP		2-1/2" SP		3" SP	
		FPM	RPM	BHP	RPM	BHP	RPM	BHP	RPM	BHP	RPM	BHP	RPM	BHP	RPM	BHP	RPM	BHP	RPM
Model 412 & 612 MAXIMUM: 2 HP, 184T FRAME, 1800 RPM 3/4" SHAFT WHEEL DIA. = 12.87" TIP SPEED = 3.37 x RPM																			
750	874	348	0.05	432	0.07	582	0.11	855	0.22	1059	0.35	1224	0.49	1366	0.64	1492	0.80	1492	0.80
1000	1166	405	0.09	481	0.12	600	0.17	827	0.28	1039	0.44	1214	0.60	1366	0.78	1499	0.96	1499	0.96
1250	1457	470	0.15	533	0.18	648	0.25	829	0.37	1011	0.52	1188	0.72	1345	0.92	1485	1.13	1485	1.13
1500	1749	538	0.24	595	0.28	697	0.35	864	0.51	1013	0.66	1164	0.84	1316	1.05	1459	1.30	1459	1.30
1750	2041	607	0.36	660	0.41	750	0.49	913	0.69	1043	0.86	1172	1.04	1299	1.23	1431	1.46	1431	1.46
2000	2332	678	0.52	728	0.57	810	0.67	963	0.89	1089	1.10	1201	1.30	1314	1.50	1426	1.71	1426	1.71
2250	2624	749	0.71	796	0.78	875	0.90	1012	1.13	1141	1.39	1246	1.62	1345	1.84	-	-	-	-
2500	2915	820	0.96	866	1.04	941	1.18	1066	1.42	1189	1.70	1297	1.98	-	-	-	-	-	-
2750	3207	891	1.26	936	1.35	1008	1.51	1127	1.78	-	-	-	-	-	-	-	-	-	-
3000	3499	963	1.61	1007	1.71	1076	1.89	-	-	-	-	-	-	-	-	-	-	-	-

CFM		OUTLET VELOCITY		1/8" SP		1/4" SP		1/2" SP		1" SP		1-1/2" SP		2" SP		2-1/2" SP		3" SP	
		FPM	RPM	BHP	RPM	BHP	RPM	BHP	RPM	BHP	RPM	BHP	RPM	BHP	RPM	BHP	RPM	BHP	RPM
Model 415 & 615 415 - MAXIMUM: 3 HP, 213T FRAME, 1500 RPM 615 - MAXIMUM: 5 HP, 215T FRAME, 1500 RPM 1" SHAFT WHEEL DIA. = 15.5" TIP SPEED = 4.03 x RPM																			
1000	677	249	0.04	343	0.08	472	0.18	654	0.39	794	0.63	911	0.89	1015	1.17	1108	1.47	1108	1.47
1500	1016	287	0.10	353	0.14	487	0.25	670	0.53	810	0.83	928	1.15	1032	1.49	1125	1.84	1125	1.84
2000	1355	342	0.19	393	0.24	498	0.36	686	0.67	826	1.03	944	1.42	1048	1.82	1142	2.24	1142	2.24
2500	1694	397	0.33	447	0.40	526	0.52	698	0.86	841	1.26	960	1.70	1064	2.17	1158	2.65	1158	2.65
3000	2032	455	0.53	502	0.62	573	0.77	707	1.08	854	1.54	975	2.00	1079	2.53	1174	3.08	1174	3.08
3500	2371	515	0.80	558	0.91	628	1.10	740	1.44	863	1.87	986	2.40	1094	2.91	1189	3.52	1189	3.52
4000	2710	576	1.15	615	1.28	684	1.52	786	1.91	885	2.32	996	2.85	1105	3.46	1202	4.04	1202	4.04
4500	3049	638	1.59	674	1.75	738	2.02	838	2.48	925	2.93	1013	3.39	1114	4.01	1212	4.70	1212	4.70
5000	3388	701	2.15	734	2.32	794	2.64	895	3.18	973	3.67	1051	4.17	1131	4.69	-	-	-	-
5500	3727	764	2.82	795	3.01	852	3.37	950	4.01	1025	4.54	-	-	-	-	-	-	-	-
6000	4065	828	3.61	857	3.83	910	4.23	1004	4.95	-	-	-	-	-	-	-	-	-	-
6500	4404	892	4.55	919	4.79	-	-	-	-	-	-	-	-	-	-	-	-	-	-

CFM		OUTLET VELOCITY		1/8" SP		1/4" SP		1/2" SP		1" SP		1-1/2" SP		2" SP		2-1/2" SP		3" SP	
		FPM	RPM	BHP	RPM	BHP	RPM	BHP	RPM	BHP	RPM	BHP	RPM	BHP	RPM	BHP	RPM	BHP	RPM
Model 418 & 618 418 - MAXIMUM: 5 HP, 184T FRAME, 1200 RPM 618 - MAXIMUM: 5 HP, 215T FRAME, 1200 RPM 1" SHAFT WHEEL DIA. = 18.5" TIP SPEED = 4.80 x RPM																			
2000	1089	275	0.17	329	0.23	409	0.33	565	0.60	722	0.98	844	1.34	941	1.69	1024	2.02	1024	2.02
2500	1362	316	0.29	364	0.36	444	0.51	561	0.75	691	1.13	821	1.58	936	2.06	1033	2.51	1033	2.51
3000	1634	359	0.47	403	0.55	477	0.73	591	1.05	687	1.35	796	1.80	898	2.27	1010	2.88	1010	2.88
3500	1907	404	0.70	444	0.81	512	1.01	625	1.42	710	1.75	793	2.11	888	2.62	978	3.16	978	3.16
4000	2179	449	1.00	487	1.13	551	1.36	659	1.84	746	2.28	817	2.64	888	3.01	972	3.60	972	3.60
4500	2452	496	1.38	531	1.54	591	1.80	692	2.33	780	2.86	853	3.33	916	3.74	975	4.11	975	4.11
5000	2724	543	1.85	575	2.03	633	2.34	728	2.92	813	3.52	887	4.09	952	4.60	-	-	-	-
5500	2997	591	2.43	621	2.62	675	2.98	767	3.62	847	4.26	921	4.92	-	-	-	-	-	-
6000	3269	639	3.11	667	3.33	718	3.72	807	4.42	-	-	-	-	-	-	-	-	-	-
6500	3542	688	3.91	714	4.15	763	4.59	-	-	-	-	-	-	-	-	-	-	-	-

Power rating bhp does not include transmission losses.

600 Series performance certified is for installation Type B - Free inlet, Ducted outlet.
 Performance ratings do not include the effects of upturnances (accessories).

SI CONVERSION FACTOR

CFM x .472 = L/s SP x .249 = kPa

'400' & '600' Series Performance Data



Delhi Industries Inc. certifies that the **600 Series** Utility Blower shown herein are licenced to bear the AMCA seal. The ratings shown are based on tests and procedures performed in accordance with AMCA Publication 211 and comply with the requirements of the AMCA Certified Ratings Programme.

Model 420 & 620																	
420 - MAXIMUM: 7-1/2 HP, 256T FRAME, 1250 RPM																	
620 - MAXIMUM: 10 HP, 254T FRAME, 1250 RPM																	
1-3/16" SHAFT WHEEL DIA. = 20.44" TIP SPEED = 5.35 x RPM																	
CFM	OUTLET VELOCITY	1/8" SP		1/2" SP		1" SP		1-1/2" SP		2" SP		2-1/2" SP		3" SP		4" SP	
	FPM	RPM	BHP	RPM	BHP	RPM	BHP	RPM	BHP	RPM	BHP	RPM	BHP	RPM	BHP	RPM	BHP
2000	738	209	0.11	365	0.30	530	0.62	661	0.99	763	1.35	851	1.71	927	2.09	1058	2.95
2500	923	235	0.19	369	0.39	517	0.73	647	1.15	760	1.61	853	2.07	935	2.52	1076	3.42
3000	1108	263	0.29	381	0.52	517	0.90	633	1.32	741	1.79	844	2.37	932	2.92	1080	4.01
3500	1292	293	0.43	398	0.70	521	1.08	633	1.56	731	2.06	820	2.55	916	3.22	1075	4.53
4000	1477	325	0.61	419	0.91	532	1.33	635	1.82	731	2.38	817	2.94	897	3.51	1060	4.94
4500	1662	357	0.84	443	1.17	546	1.64	642	2.13	733	2.72	817	3.34	895	3.98	1036	5.25
5000	1847	391	1.13	469	1.50	564	2.01	654	2.54	738	3.08	819	3.77	895	4.47	1034	5.88
5500	2031	424	1.47	497	1.88	585	2.43	669	3.00	748	3.60	824	4.22	897	4.98	1033	6.52
6000	2216	458	1.88	525	2.34	609	2.91	687	3.54	761	4.17	833	4.82	902	5.52	1034	7.18
6500	2401	492	2.36	555	2.87	634	3.47	707	4.15	777	4.82	845	5.52	910	6.23	1037	7.88
7000	2585	527	2.92	586	3.46	660	4.13	729	4.83	796	5.56	860	6.29	923	7.05	1042	8.61
7500	2770	561	3.57	617	4.14	687	4.88	753	5.58	816	6.37	877	7.16	937	7.95	-	-
8000	2955	596	4.30	649	4.91	715	5.71	778	6.44	838	7.27	896	8.11	953	8.94	-	-
8500	3139	630	5.13	682	5.78	744	6.65	804	7.43	861	8.26	917	9.16	-	-	-	-
9000	3324	665	6.06	715	6.75	774	7.68	831	8.53	886	9.35	-	-	-	-	-	-
9500	3509	700	7.10	748	7.82	804	8.81	859	9.73	-	-	-	-	-	-	-	-
10000	3694	735	8.25	782	9.01	-	-	-	-	-	-	-	-	-	-	-	-

Model 422 & 622																	
422 - MAXIMUM: 7-1/2 HP, 256T FRAME, 1200 RPM																	
622 - MAXIMUM: 10 HP, 254T FRAME, 1200 RPM																	
1-3/16" SHAFT WHEEL DIA. = 22.12" TIP SPEED = 5.79 x RPM																	
CFM	OUTLET VELOCITY	1/8" SP		1/2" SP		1" SP		1-1/2" SP		2" SP		2-1/2" SP		3" SP		4" SP	
	FPM	RPM	BHP	RPM	BHP	RPM	BHP	RPM	BHP	RPM	BHP	RPM	BHP	RPM	BHP	RPM	BHP
3000	925	222	0.24	342	0.50	474	0.93	592	1.47	696	2.06	786	2.70	867	3.41	1007	4.87
3500	1080	244	0.34	354	0.64	471	1.08	583	1.65	683	2.27	774	2.95	856	3.69	1000	5.27
4000	1234	267	0.47	369	0.81	479	1.31	577	1.83	674	2.52	762	3.23	843	3.97	990	5.64
4500	1388	291	0.64	386	1.01	489	1.56	580	2.13	667	2.77	753	3.54	833	4.33	977	6.01
5000	1542	316	0.84	404	1.26	502	1.84	588	2.47	667	3.11	746	3.85	824	4.70	965	6.48
5500	1697	341	1.09	424	1.55	517	2.17	599	2.86	674	3.55	745	4.25	817	5.07	956	6.97
6000	1851	366	1.38	444	1.89	533	2.53	611	3.28	684	4.04	751	4.78	816	5.56	948	7.46
6500	2005	392	1.72	466	2.28	551	2.97	626	3.74	695	4.56	760	5.38	821	6.19	942	7.96
7000	2160	417	2.11	488	2.73	569	3.49	642	4.26	708	5.13	771	6.01	830	6.89	943	8.67
7500	2314	443	2.55	511	3.23	588	4.05	659	4.84	722	5.76	783	6.69	841	7.65	948	9.52
8000	2468	469	3.06	534	3.79	608	4.68	676	5.52	738	6.44	796	7.43	852	8.44	-	-
8500	2622	495	3.64	558	4.42	629	5.38	695	6.29	755	7.19	811	8.23	865	9.29	-	-
9000	2777	522	4.28	582	5.12	650	6.14	714	7.12	773	8.04	827	9.10	-	-	-	-
9500	2931	548	4.99	607	5.90	672	6.98	733	8.03	790	9.02	-	-	-	-	-	-
10000	3085	575	5.79	632	6.75	695	7.90	753	9.01	-	-	-	-	-	-	-	-
10500	3240	601	6.66	657	7.69	717	8.90	-	-	-	-	-	-	-	-	-	-
11000	3394	628	7.62	683	8.72	741	9.99	-	-	-	-	-	-	-	-	-	-
11500	3548	655	8.67	708	9.83	-	-	-	-	-	-	-	-	-	-	-	-
12000	3702	682	9.81	-	-	-	-	-	-	-	-	-	-	-	-	-	-

Model 425 & 625																	
425 - MAXIMUM: 10 HP, 256T FRAME, 1000 RPM																	
625 - MAXIMUM: 10 HP, 254T FRAME, 1000 RPM																	
1-3/16" SHAFT WHEEL DIA. = 25.25" TIP SPEED = 6.61 x RPM																	
CFM	OUTLET VELOCITY	1/8" SP		1/2" SP		1" SP		1-1/2" SP		2" SP		2-1/2" SP		3" SP		4" SP	
	FPM	RPM	BHP	RPM	BHP	RPM	BHP	RPM	BHP	RPM	BHP	RPM	BHP	RPM	BHP	RPM	BHP
5000	1174	217	0.53	316	0.86	421	1.52	513	2.33	594	3.17	665	4.02	730	4.92	845	6.93
5500	1291	230	0.67	325	1.06	425	1.67	513	2.52	593	3.44	665	4.37	729	5.31	844	7.35
6000	1408	244	0.83	336	1.28	430	1.85	515	2.73	592	3.70	664	4.70	728	5.72	842	7.79
6500	1526	258	1.01	348	1.53	437	2.04	519	2.96	592	3.96	662	5.03	727	6.12	841	8.34
7000	1643	272	1.21	359	1.81	445	2.39	523	3.21	595	4.25	661	5.36	726	6.52	841	8.88
7500	1761	287	1.43	371	2.13	454	2.77	529	3.48	599	4.55	663	5.70	725	6.91	840	9.42
8000	1878	301	1.69	383	2.48	464	3.18	536	3.78	603	4.88	667	6.07	726	7.31	838	9.95
8500	1995	316	1.97	395	2.86	476	3.63	544	4.30	609	5.24	670	6.46	728	7.74	-	-
9000	2113	331	2.29	407	3.28	487	4.11	553	4.86	615	5.61	675	6.87	732	8.19	-	-
9500	2230	347	2.64	420	3.73	499	4.66	563	5.46	623	6.18	681	7.31	736	8.67	-	-
10000	2348	362	3.03	433	4.23	510	5.25	573	6.10	631	6.90	687	7.79	741	9.18	-	-
10500	2465	377	3.46	447	4.77	522	5.88	584	6.79	640	7.65	694	8.43	747	9.72	-	-
11000	2582	393	3.92	460	5.35	533	6.56	596	7.52	650	8.46	702	9.31	-	-	-	-
11500	2700	409	4.43	474	5.99	546	7.28	608	8.33	661	9.31	-	-	-	-	-	-
12000	2817	424	4.99	488	6.66	558	8.05	619	9.20	-	-	-	-	-	-	-	-
12500	2935	440	5.59	502	7.33	570	8.88	-	-	-	-	-	-	-	-	-	-
13000	3052	456	6.23	516	8.05	583	9.75	-	-	-	-	-	-	-	-	-	-
13500	3169	472	6.93	530	8.82	-	-	-	-	-	-	-	-	-	-	-	-
14000	3287	488	7.68	544	9.64	-	-	-	-	-	-	-	-	-	-	-	-
14500	3404	504	8.48	-	-	-	-	-	-	-	-	-	-	-	-	-	-
15000	3522	520	9.34	-	-	-	-	-	-	-	-	-	-	-	-	-	-

Power rating bhp does not include transmission losses.
600 Series performance certified is for installation Type B - Free inlet, Ducted outlet.
 Performance ratings do not include the effects of appurtenances (accessories).

SI CONVERSION FACTOR
CFM x .472 = L/s SP x .249 = kPa

Accessories

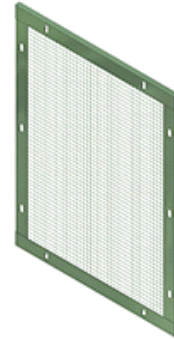
Back Draft Damper



Inlet Screen



Outlet Screen



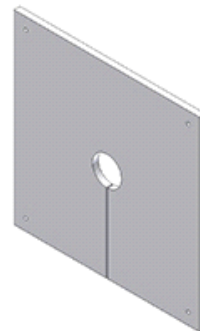
Bolted Clean Out Door



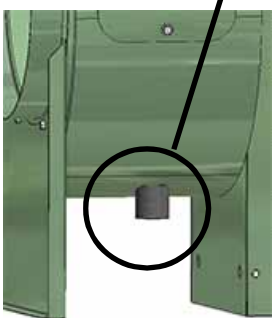
Heat Slinger



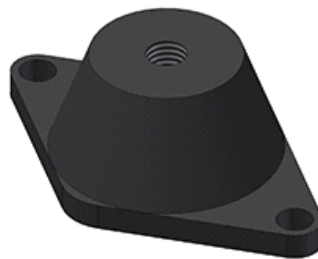
Shaft Seal



Drain Fitting



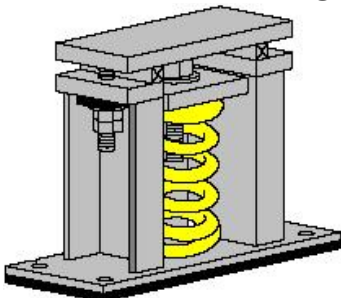
Vibration Isolators Rubber



Vibration Isolators Spring



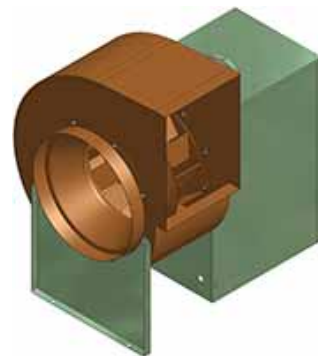
Vibration Isolators Outdoor Spring



'V' Cap



Heresite Coating



Other **DELHI** Catalogues



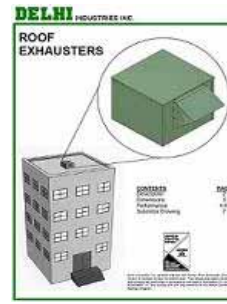
Cat. #SS-31
Forward Curved
Duct Blowers



Cat. #SS-38
Heating & Cooling
Coils



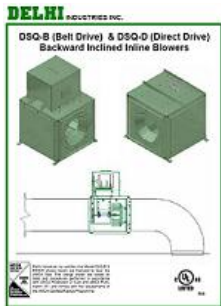
Cat. #SS-52
Direct Expansion
Coils



Cat. #SS-43
Roof Mounted
Exhausters



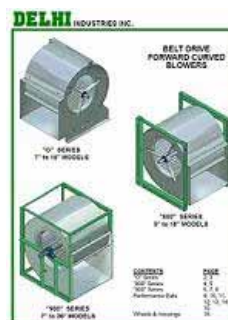
Cat. #SS-32
Filtered Fresh Air
Supply Units



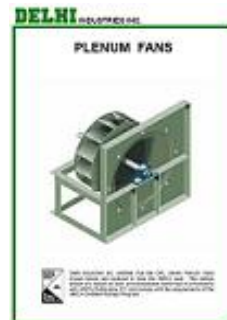
Cat. #SS-50
Backward Inclined
Inline Blowers



Cat. #SS-44
DWDI - BI
Blowers



Cat. #SS-49
7" - 36"
FC Blowers



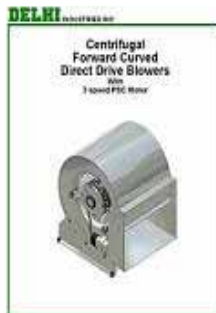
Cat. #SS-48
Plenum
Fans



Cat. #SS-45
Direct Drive
Utility Blowers



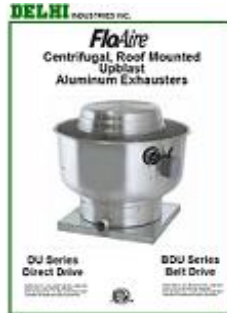
Cat. #SS-34
Replacement
Parts



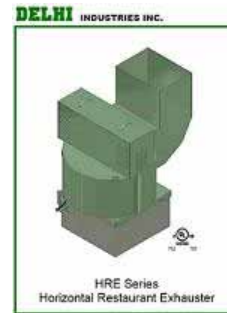
Cat. #SS-53
FC Direct Drive
Blower with Motor



Cat. #SS-51
Aluminum
Exhausters



Cat. #SS-54
Uplast
Exhausters



Cat. #SS-55
Horizontal
Restaurant
Exhauster

DELHI Industries Inc.
523 James St.
Delhi, Ontario
Canada N4B 2Z3
tel. (519) 582-2440
fax. (519) 582-0581
www.delhi-industries.com
e-mail: sales@delhi-industries.com

REPRESENTED BY:

CAT. #SS-30-8 FEBRUARY 2007

WARRANTY

Delhi Air Moving Products are guaranteed for a period of one year against manufacturing defects in material and workmanship when operating under normal conditions. Liability is limited to the replacement of defective parts. Labour and transportation costs are not included.

Printed in Canada